



Central Coast
REGIONAL DISTRICT

REQUEST FOR PROPOSAL

Great Bear Playgrounds Project
Reference No. IR0181

January 2024

TABLE OF CONTENTS

1.0 PROJECT OVERVIEW	1
2.0 SITE LOCATIONS / DESCRIPTIONS	1
2.1 WALKER ISLAND PARK	1
2.2 NUSATSUM PARK	3
3.0 INFORMATION / MATERIALS AVAILABLE TO PROPONENTS	5
3.1 TOPOGRAPHIC SURVEY	5
3.2 GEOTECHNICAL INVESTIGATION REPORT	5
3.3 OWNER SUPPLIED MATERIALS	5
3.4 LOCALLY AVAILABLE RESOURCES	6
3.5 PROJECT BUDGET	6
4.0 SCOPE OF WORK.....	6
4.1 PLAYGROUND LAYOUT OPTIONS	7
4.2 DETAILED PLAYGROUND DESIGN.....	7
4.3 DESIGN OF SITE WORKS	8
4.4 CONSTRUCTION SERVICES.....	8
5.0 DESIGN CRITERIA.....	9
5.1 WALKER ISLAND PARK	9
5.2 NUSATSUM PARK	10
6.0 PROPONENT QUALIFICATIONS	12
7.0 SCHEDULE.....	12
8.0 CONTRACTUAL REQUIREMENTS.....	12
9.0 SUBMISSION REQUIREMENTS.....	13
9.1 SUBMISSION OF PROPOSALS	13
9.2 PROPOSAL FORM.....	13

10.0 EVALUATION OF PROPOSALS 16

10.1 PROPOSAL ACCEPTANCE..... 16

10.2 EVALUATION COMMITTEE 16

10.3 EVALUATION CRITERIA 17

10.4 SELECTION PROCESS..... 17

10.5 NO OBLIGATION..... 17

APPENDICES

- Appendix A Site Constraints Diagrams
- Appendix B Form of Contract
- Appendix C Pricing Sheets

1.0 PROJECT OVERVIEW

The Central Coast Regional District (CCRD) is proceeding with the design and construction of two (2) new playgrounds in the Bella Coola Valley, located within Walker Island Park and Nusatsum Park.

The CCRD has issued this Request for Proposal (RFP) to invite qualified playground design-build Proponents to present turn-key solutions to design, supply, and install the proposed new playgrounds.

Urban Systems Ltd. (Urban Systems) has been retained as consultants by the CCRD to administer this RFP and provide technical review of the playground design and construction works.

The CCRD intends to select a single Proponent for both playground sites. The Successful Proponent(s) will be invited to enter into a contractual agreement with the CCRD.

2.0 SITE LOCATIONS / DESCRIPTIONS

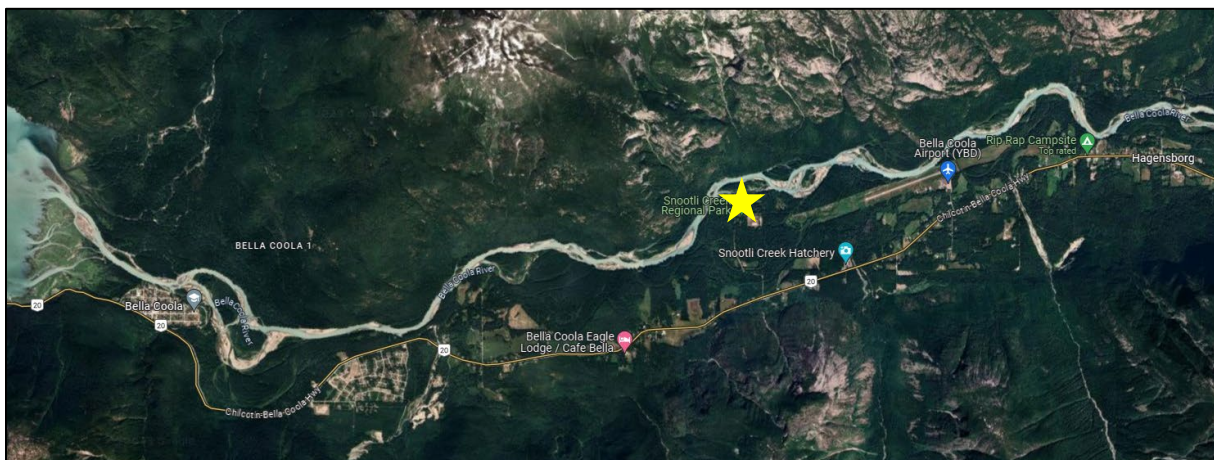
The project sites are located within the Bella Coola Valley, near the community of Hagensborg. The Valley is accessible by road via Highway #20, approximately 450 km east of Williams Lake. Limited barge and ferry service is provided via the Lower Mainland / Vancouver Island. Pacific Coastal Airlines also offers regular flights to the Bella Coola Airport via YVR South Terminal.

2.1 WALKER ISLAND PARK

The location of Walker Island Park (also known as Snootli Creek Regional Park) is as follows:

Coordinates: 52°23'03.8"N 126°37'47.8"W

<https://maps.app.goo.gl/6gyFmcTFqKNddAye7>



Walker Island Park is a community level park with high use from residents across the Bella Coola Valley. The park comprises multiple facilities, including a baseball diamond, concession stand, and trail connections. The existing playground equipment is predominantly slated for removal and disposal by the Proponent. The photos below provide an indication of the existing Walker Island Park facilities. Further details identifying site constraints, layout and removals are in **Appendix A**.



View from parking lot



View from ball field

2.2 NUSATSUM PARK

The location of Nusatsum Park is as follows:

Coordinates: 52°23'55.6"N 126°28'59.9"W

<https://maps.app.goo.gl/v9zkJC3UVt1NQdsB8>



Nusatsum Park is a neighbourhood level park with regular use by nearby residents and a small number of visitors from across the Bella Coola Valley. The site backs onto a network of trails, which are well used by the community. There is existing playground equipment, slated for removal and disposal by the Proponent. The photos below provide an indication of the existing Nusatsum Park facilities. Further details identifying site constraints, layout and removals are in **Appendix A**.



View from parking lot



View from treeline

3.0 INFORMATION / MATERIALS AVAILABLE TO PROPONENTS

Proponents are advised of the following available and pending information.

3.1 TOPOGRAPHIC SURVEY

The CCRD has completed a preliminary topographic survey at each site. LIDAR data and ortho imagery of the area has also been collected, encompassing the sites and surrounding areas. This information is available in CAD format to all proponents, to utilize for base plans or otherwise incorporate into the detailed design.

3.2 GEOTECHNICAL INVESTIGATION REPORT

A geotechnical investigation is underway, consisting of a desktop assessment of each site informed by local test pits. A geotechnical investigation report is being prepared and will be provided to the Proponent. The intent is to outline the expected soil and groundwater conditions at each site.

3.3 OWNER SUPPLIED MATERIALS

The CCRD has a variety of milled and natural timber materials available to contribute to this project. This material is envisioned to be used as edger/cribbing for the playground site(s). However, Proponents are encouraged to incorporate the available CCRD supplied materials as they see fit to bolster the site designs and realize cost efficiencies. Photos of the available materials (with approximate dimensions) are provided below.





3.4 LOCALLY AVAILABLE RESOURCES

The CCRD has posted a Request for Expression of Interest (RFEOI) to identify locally available labour, materials, equipment, or other applicable resources for this project. Proponents will be provided with a list of local resources, along with contact details, following the closing of the RFEOI. This information will be provided to all Proponents via addendum the week of January 15th.

3.5 PROJECT BUDGET

The CCRD has allocated a budget of approximately \$425,000 for Walker Island Park and approximately \$275,000 for Nusatsum Park, inclusive of the design, supply, and installation of the playground equipment and construction of associated site works and amenities. These budgets are provided to Proponents such that the scale and composition of the proposed design solutions can be developed accordingly.

4.0 SCOPE OF WORK

The scope of work covered in this RFP generally includes:

- Development of playground layout options and costing for review and consideration;
- Preparation of a detailed design package for the selected playground option for each site;
- Preparation of designs for site works peripheral / ancillary to the playground equipment; and
- Supply, delivery, installation of playground equipment;
- Complete construction / implementation of the works on site.

The following sections elaborate on each scope component. Proponents are also directed to the Site Constraints Diagrams included in **Appendix A**.

4.1 PLAYGROUND LAYOUT OPTIONS

Proponents are expected to prepare up to two (2) playground layout options for each site incorporating the specified design criteria outlined in Section 5.0 of this RFP. Designs shall include mandatory specified components and optional combinations of additional equipment that fit within community desires and budget parameters. Components should be clearly outlined as mandatory / core to the concept or optional for consideration by the CCRD. Further, play components with accessibility features must be directly noted with an icon and other unique / specialized attributes identified.

Proponent submissions shall include a digital depiction of each playground layout option, consisting of up to three (3) pages per option. Visual materials shall be in scaled PDF format and either 22x34" or 11x17" standard page sizes. Graphic presentation panels may be in full colour, and may include plan views, elevation views, 3D perspectives, photographic imagery, colour options, or any other information which Proponents feel will best convey the intent of their submitted layout options. All graphic presentation panels must include a key legend, scale bar and title block.

Presentation panels MUST NOT include any representative or manufacturer's identifying information or logos. The CCRD may utilize these visuals to inform proposal evaluation as well as for community engagement purposes.

This portion of the scope forms part of the Proponent's proposal submission. Refer to Section 9.2 below.

4.2 DETAILED PLAYGROUND DESIGN

The CCRD, Urban Systems, and Successful Proponent will work together to refine the scope of work, design concepts for the playground facilities / site works, and other project delivery details. The Proponent will be expected to prepare a final design package for the playground equipment that:

- Complies with applicable Canadian Standards Association (CSA) Standards for playground design;
- Is designed by a dually qualified and experienced playground designer.
- Includes footing design approvals by a geotechnical engineer, to be signed and sealed by a Professional Engineer registered in British Columbia and submitted in a form deemed acceptable by the owner.
- Includes structural engineering approvals of all equipment if not provided by the manufacturer and submitted in a form deemed acceptable by the owner.
- Includes plans, profiles, sections, isometrics, or other views to depict the design components;
- Identifies design criteria used to inform the proposed playground concept;
- Outlines construction details of a technical nature, sequence of installation, or similar; and
- Other details that the Proponent or CCRD feels should be captured in the design deliverable.
- Upon completion of install can be signed off by a Canadian Parks and Recreation Association (CPRA) Certified Playground Safety Inspector (CPSI)

4.3 DESIGN OF SITE WORKS

In addition to the supply and installation of the play equipment, the Proponent is responsible for site works / amenities including:

- Removal and disposal of existing playground equipment to location specified by the CCRD;
- Removal and local stockpiling of unsuitable organic materials within the site footprints to location specified by the CCRD;
- Supply, placement, and compaction of imported granular materials as required for the facility base / subbase;
- Finished grading to achieve positive drainage directing run-off away from facilities including supply / installation of culverts or similar as required for ditch and natural drainage crossings as necessary;
- Installation of edger / cribbing to delineate playground footprints, encouraging use of CCRD supplied materials;
- Construction of pathways or other connectivity features peripheral to the sites;
- Restoration including drill seeding (with seed mix appropriate to Bella Coola Valley climate), shade tree planting, or similar; and
- Supply and installation of park amenities such as benches, trash receptacles, or similar.
- Restoration and return to existing conditions of any park elements moved during construction process.

Similar to the detailed playground design, the scope of work and layout of the site works will be collaboratively refined as a team with input from the Proponent, CCRD, and Urban Systems.

4.4 CONSTRUCTION SERVICES

Construction works / services appropriate to each site, generally include but are not limited to:

- Location of existing utilities in advance of construction including BC One Call, consultation with local utility operators, and other appropriate due diligence;
- Notice of Project requirements as per WorkSafeBC;
- Development of a Site Safety Plan to be distributed to all project participants that may visit the sites during construction;
- Supply, installation, and maintenance of temporary construction fencing to secure access to the project sites for all equipment and materials as necessary;
- Ensuring all playground installation work is supervised by a Certified Playground Safety Inspector with appropriate documentation circulated following each inspection;

- Coordinating with the project team to ensure the required site inspections, field reviews, material tests, and similar are completed;
- Taking and sharing photos of specific works or details requested by the CCRD or Urban Systems;
- Participating in video calls so that key activities can be remotely witnessed;
- Cooperating with locally appointed CCRD representatives to oversee specific aspects of the work; and
- Generally working with the CCRD and Urban Systems to ensure appropriate quality assurance / quality control of the works.

Further to the above, post-construction deliverables shall include:

- As-built record drawings of final installed works, endorsed by the Proponent;
- Operations and maintenance manuals if available;
- Product warranty information and contract details; and
- Other information as agreed to by the Proponent and CCRD.

5.0 DESIGN CRITERIA

5.1 WALKER ISLAND PARK

Design criteria for Walker Island Park are as follows:

1. The playground shall blend modern metal and natural play elements to complement the beauty of the site. Suggestions on design style from the public engagement include:
 - Nature themed.
 - Celebrate the wildlife of the region (ie. grizzly bears, salmon, eagles).
 - Use a natural colour palette, with accents of red, teal and dark blue.
2. The total area of the playground footprint as measured to the limits of the inside edge of the playground edge, and determined by equipment fall zones onto safety surfaces should not exceed 400 m², unless required for core equipment layout. Additional specifics include:
 - The playground layout must occur within the area outlined in the Site Constraints Diagram.
 - The playground must not encroach on the identified tree protection areas.
 - The playground footprint may be organically shaped and adjusted as necessary to accommodate fall zones. The radius of any footprint curve shall not be less than 3.0 m.
 - Organic shapes must account for the use of the specified edger material, as outlined below.

- Large natural boulders may be used in combination with edger to achieve irregular corners.
 - Accessible connections to the parking area and ramp in the concession stand, outlined in the Site Constraints Diagram must be considered in the playground layout and footprint shape.
 - Accessible connections to the playground area and inclusive play elements should be considered in the safety surface, edger design and equipment layout.
3. Timber edging/ cribbing encouraged, of sufficient width and depth to contain installed safety surface. Locally sourced or owner supplier materials preferred.
 4. The target age range of the playground is from school age (5) to age 13. Equipment for younger and older groups is beneficial, but not a requirement.
 5. Playground equipment should be inclusive and inviting to individuals with social, sensory, or intellectual disabilities. The playground must be partially accessible to individuals with mobility challenges. Minimum accessibility requirements are suggested as follows:
 - Some portion of the playground must be inclusive to wheelchair users or those with limited mobility through an accessible surface.
 - The portion of the playground with an accessible surface must include one play element that is inclusive to individuals with mobility challenges.
 - Playground elements incorporated for visually impaired users.
 - Playground elements incorporating texture.
 6. The playground must include the following components identified through public consultation:
 - A tower or tall multi-play structure.
 - A zip-line / cableway.
 7. Optional playground elements for consideration identified through public consultation include:
 - Elements of risky play, such as going fast, balancing, climbing, or similar.
 - A bay of traditional, tire or friendship swings.
 - Play experiences involving spinning and bouncing.
 8. Park amenity landscaping shall include:
 - Two (2) new additional benches.
 - One (1) Haul-All Bear Proof waste receptacle.

5.2 NUSATSUM PARK

Design criteria for Nusatsum Park are as follows:

1. The playground shall blend modern metal and natural play elements to complement the beauty of the site. Suggestions on design style from the public engagement include:
 - Forest theme.
 - Use a natural colour palette.
2. The total area of the playground footprint as measured to the limits of the inside edge of the playground edge, and determined by equipment fall zones onto safety surfaces shall not exceed 300 m². Additional specifics include:
 - The playground layout must occur within the area outlined in the Site Constraints Diagram.
 - The playground must not encroach on identified tree protection areas.
 - The playground footprint may be organically shaped and adjusted as necessary to accommodate fall zones. The radius of any footprint curve shall not be less than 3.0 m.
 - Organic shapes must account for the use of the specified edger material, as outlined below.
 - Large natural boulders may be used in combination with edger to achieve irregular corners.
 - Layout must include the proposed fencing between the playground facility and adjacent street.
 - Accessible connections to the playground area and inclusive play elements should be considered in the edge design and layout.
3. Timber edging/cribbing encouraged, of sufficient width and depth to contain installed safety surface. Locally sourced or owner supplier materials preferred.
4. The target age range of the playground is pre-school and elementary aged children, and the playground should be suited for ages from toddler (2 - 5) and school age (5 - 12). Equipment for younger and older groups is beneficial, but not a requirement.
5. Playground equipment should be inclusive and inviting to individuals with social, sensory or intellectual disabilities. Minimum accessibility requirements are suggested as follows:
 - Playground elements incorporated for visually impaired users.
 - Playground elements incorporating texture.
 - Playground elements should strive to be inclusive for children of diverse abilities.
6. The playground must include the following components identified through public consultation:
 - Play experiences for younger children (2 - 5), separated from the main play structure.
 - Swing sets and slides (traditional or non-traditional).
7. Optional playground elements for consideration identified through public consultation include:
 - Sensory play elements.

- Parallel play and cooperative play.
8. Park amenity landscaping to include:
- Two (2) new benches.
 - Consideration for shade.
 - Bollard and chain type fencing across frontage, with minimum 3.0 m width opening.

6.0 PROPONENT QUALIFICATIONS

The CCRD is seeking a design-build Proponent that can deliver a turn-key service for the proposed playgrounds. Proponents are expected to have:

- A team comprised of individuals with design, equipment installation, and site works construction expertise;
- A Certified Playground Safety Inspector on the team;
- A minimum of five (5) years of incorporated experience as a playground equipment supplier and / or designer;
- Completed at least three (3) projects of a similar nature to this RFP in the last five (5) years;
- Experience working in British Columbia including representatives assigned to British Columbia; and
- A reliable relationship or partnership with playground equipment supplier(s) as needed to satisfy the scope of this project.

7.0 SCHEDULE

The anticipated schedule for this project is as follows:

- Close RFP and identify Preferred / Successful Proponent – February 2024
- Refine scope and confirm final design – February 2024
- Award full project and execute contracts / agreements – March 2024
- Initiate equipment procurement / production – April 2024
- Construction of site works and playground facilities – Spring / Summer 2024
- Project completion – no later than August 31, 2024

The schedule will be confirmed with the CCRD and Successful Proponent at the project outset.

8.0 CONTRACTUAL REQUIREMENTS

The Successful Proponent is expected to enter into a contract with the CCRD to complete the works.

Preliminary design work to refine the design concepts and costs may be completed under an agreement in a form mutually agreeable to the CCRD and Successful Proponent.

Once the preliminary design concepts and pricing have been agreed to, the CCRD and Successful Proponent will enter into a CCDC 14 Design-Build Stipulated Price Contract. A copy of the proposed form of contract is included as **Appendix B**.

Proponents shall confirm a commitment to enter into the proposed contract with the CCRD. If there are any desired revisions or exceptions taken to the proposed form of contract, these should be clearly outlined in the proponent's submission.

The Successful Proponent will be the Prime Contractor for the work, and as such, will be expected to have applicable WorkSafeBC coverage in place.

In accordance with the Builders Lien Act and as outlined in the contract, a builders lien holdback will be applied to all payments.

A Bid Bond will not be required as part of the Proponent response to this RFP, however a Performance Bond and Labour and Material Payment Bond will be required as per the CCDC 14 contract terms.

9.0 SUBMISSION REQUIREMENTS

9.1 SUBMISSION OF PROPOSALS

Proposals shall be submitted electronically, in print-ready PDF format and file size not exceeding 20 MB, via email to:

Central Coast Regional District
c/o Urban Systems Ltd.
Attention: Quinn Howard, BCSLA
qhoward@urbansystems.ca

The PDF file and email subject shall clearly indicate CCRD Great Bear Playgrounds Project and Proponent name.

Proponents must respond to this RFP by **2:00 PM PST on February 15th, 2024**.

Any inquiries regarding this RFP shall be directed to the above via email.

9.2 PROPOSAL FORM

Proponent's proposal submissions shall consist of a maximum of forty (40) pages inclusive of all appendices and supporting documents. Submissions should focus on communicating the details of the proposed concept and approach and how such has been specifically tailored to the CCRD, Bella Coola Valley, and requirements of this RFP. Standard corporate literature with little or no relevance to this project is not desired.

Proponents are asked to provide the following information in the Proposal submissions using the specified bolded headings and sequence outlined below.

Cover – Maximum one (1) page and citing:

- Date of submission;
- Proponent name;
- Title of project (CCRD Great Bear Playgrounds Project); and
- Project reference number (IR0181).

Cover Letter / Executive Summary – Maximum two (2) pages and identifying:

- Acknowledged receipt of any addenda issued by citing Addendum # and date issued;
- Key details or highlights of the submission;
- How the proposed concept / approach has been tailored to this RFP; and
- Other information the Proponent wishes to reinforce.

1.0 Proponent Information

- Company name and address.
- Key project contact(s) including name, title, phone, and email.

2.0 Experience

- Summary of corporate experience.
- Examples of projects completed of a similar nature.
- Examples of where equipment proposed for the CCRD has been used elsewhere.

3.0 Project Team

- Identify specific team members and associated roles / responsibilities.
- Describe experience, skillsets, qualifications, etc. of each team member as appropriate.
- Identify suppliers of major equipment components.
- List subcontractors or other team members beyond the Proponent's core team.

4.0 References

- List a minimum of three (3) references including name, organization, phone number, email, and a brief description of their connection to / experience with the Proponent.

5.0 Approach

- Outline proposed approach to work as a collaborative project team.
- Describe key tasks, steps, sequence of events, or similar to the success of this project.

- Identify availability of Proponent contacts beyond the completion of this project for customer / technical support, assistance with warranty items, or similar.

6.0 Contract

- Confirm commitment to enter into contract with CCRD.
- Cite any exceptions taken to proposed CCDC 14 contract including reference to specific clauses.

7.0 Schedule

- Identify key milestone dates, including but not limited to:
 - RFP Closing
 - Design Refinement
 - Contract Negotiation / Award
 - Equipment Procurement
 - Mobilization to Site
 - Site Preparation Works
 - Equipment Supply / Installation
 - Ancillary Site Works / Restoration
 - Completion / Demobilization
 - Post-Construction Documentation

8.0 Design Concept Options

- Maximum of two (2) design concept options, with optional components or combinations, per site as noted in Section 4.1.
- Describe the vision / theme / uniqueness of each specific option.
- Highlight any pertinent benefits or drawbacks.
- Identify how CCRD supplied materials have been incorporated.
- Provide a list of specific components included in each design concept option.

9.0 Costs

- For each design concept option, populate the Pricing Sheet included in **Appendix C**. Use the line items provided to reflect a comprehensive price / quotation for each option.
- Confirm commitment to the prices submitted as an official quotation endorsed by the Proponent.
- Confirm that quotations remain valid for at least ninety (90) days from the RFP closing date.

- Identify any limitations that the CCRD allocated budgets have placed on the proposed design concept options.
- List a breakdown of the costs for specific equipment / design components beyond that included in the Pricing Sheets to communicate the costs of the design concept options as appropriate.
- Identify the costs (with breakdown as appropriate) for any potential extra / optional components the Proponent wishes to highlight, and similarly for any potential cost savings ideas.

10.0 Warranty Information

The Proponent must warrantee installed equipment as follows:

- Minimum 1-year warranty on workmanship.
- Minimum 2-year warranty on any manufacturer's defects.
- Minimum 25-year warranty on structural components.
- Assurance that replacement parts of equipment components will be readily available if necessary.
- Outline process for warranty claims and include key representatives and their contact information.
- Supply the reference of one client, at minimum, who has initiated and completed a warranty claim.

10.0 EVALUATION OF PROPOSALS

10.1 PROPOSAL ACCEPTANCE

Proposals received after the RFP closing date / time cited in Section 9.1 will not be considered nor shall proposals submitted in hardcopy format or to an email address other than that noted in Section 9.1.

Incomplete proposals or submissions deemed not to comply with the requirements set out in this RFP will not be considered for further evaluation.

Proposals will not be opened in public.

10.2 EVALUATION COMMITTEE

Proposals will be evaluated by a committee comprised of representatives from the CCRD and Urban Systems. This committee may draw on input from other parties as appropriate to inform the evaluation, including but not limited to Proponent references (listed or unlisted).

10.3 EVALUATION CRITERIA

The evaluation of proposal submissions will consider the following criteria and weighting:

Evaluation Category	Weighting
Project Delivery Approach - Proposed delivery plan, commitment to collaboration with broader team, and similar.	15%
Playground Equipment: Durability, innovation, variety, compliance with objectives identified in this RFP, and best value and play experience for money spent.	35%
Conceptual Design - Layout, functionality, safety, and best use of available space as identified in this RFP.	20%
Schedule – Commitment to achieve project schedule with realistic timelines outlined for each key milestone.	10%
Proponent Qualifications / References – Skillset, experience, and qualifications of proposed project team members and quality of references.	10%
Use of Local Resources – Extent to which local resources, owner supplied materials, and similar have been incorporated into proposal plan.	5%
Product Guarantee and Warranty – Product and workmanship warranties and process by which warranty items would be addressed.	5%
Total	100%

10.4 SELECTION PROCESS

The evaluation committee will identify a Preferred Proponent based on the criteria outlined above. The broader team, including the CCRD and Urban Systems, will then work together to refine the concept and confirm the cost to arrive at an agreed path forward. Further input from the community may be sought to inform this step. The final scope, schedule, budget, and similar will then be formalized via negotiation and execution of the CCDC 14 design-build contract.

10.5 NO OBLIGATION

The CCRD reserves the right to negotiate with any Proponent following submission of proposals, or to cancel this RFP and enter into discussions with other Proponents as they deem necessary. The CCRD reserves the right to award portions of the work to multiple Proponents or a single Proponent as they see fit.

APPENDIX A

SITE CONSTRAINTS DIAGRAMS

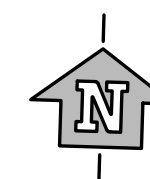


1 WALKER ISLAND - PLAYGROUND LAYOUT CONCEPT
SCALE 1:200

LEGEND

SYMBOL	DESCRIPTION
	PROPOSED PLAYGROUND AREA 450m MAX
	PLAYGROUND AREA - ALLOWABLE EXPANSION
	PLAYGROUND SURFACE - ACCESSIBLE
	PLAYGROUND SURFACE
	ACCESSIBLE GRANULAR PATH
	CHAIN AND BOLLARD FENCE - TO RETAIN
	TREE PROTECTION ZONE - DO NOT ENCROACH
	EQUIPMENT - TO RETAIN
	EQUIPMENT - TO REMOVE
	EXISTING SAFETY SURFACE - TO REMOVE
	EQUIPMENT - TO REMOVE - OPTIONAL

- EXISTING PIT TOILET
- BENCH ON CONCRETE PAD, BY PROPONENT LOCATION TO BE CONFIRMED DURING DETAIL DESIGN
- HAUL ALL BEAR PROOF WASTE RECEPTACLES
- HAUL ALL BEAR PROOF WASTE RECEPTACLES
- ALLOWABLE EXPANSION ZONE AS REQUIRED BY EQUIPMENT REQUIREMENTS (ZIPLINE). PROPONENT ADJUST LAYOUT TO MINIMIZE DISTURBANCE TO EXISTING TREES
- PRIMARY PLAYGROUND EQUIPMENT ZONE
- PLAY SURFACE SHAPE TO BE DETERMINED BY PROPONENT
- PLAY SURFACE - ACCESSIBLE SHAPE TO BE DETERMINED BY PROPONENT
- ENSURE ACCESSIBLE CONNECTION BETWEEN PATH AND PLAY AREA
- REMOVE EXISTING BOLLARDS AT GRANULAR PATH ENTRANCE TO ENSURE MIN 3m GAP
- 2.0m ACCESSIBLE GRANULAR PATH
- BENCH ON CONCRETE PAD, BY PROPONENT



2 WALKER ISLAND - REMOVALS
SCALE 1:200



3 TIMBER EDGER WITH NATURAL BOULDER
NTS

PLAYGROUND CONCEPT NOTES

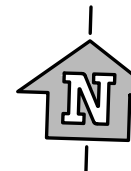
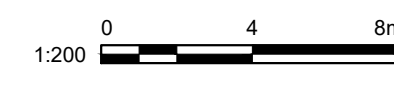
ALL OF THE CLAUSES STATED BELOW ARE THE MINIMUM STANDARD UNLESS A HIGHER STANDARD HAS BEEN INDICATED ELSEWHERE IN THE CONTRACT DOCUMENTS.

A. LAYOUT AND DESIGN

1. PLAYGROUND AREA IS SHOWN FOR REFERENCE ONLY
2. SHAPE TO BE DETERMINED BY PROPONENT DESIGN AND SUITED TO MEET EQUIPMENT REQUIREMENTS AND MINIMIZE COSTS TO OWNER
3. MAX AREA TO BE 400m sq
4. ORGANIC EDGE SHAPE PERMITTED
5. INNER EDGE OF TIMBER TO BE 0.2m MINIMUM FROM REQUIRED PLAY EQUIPMENT FALL ZONE
6. NATURAL BOULDERS TO BE USED BETWEEN TIMBER MEMBERS AND TO ACCOMMODATE ANGLED CONNECTIONS.
7. THE CONTRACTOR IS TO VERIFY ALL DIMENSIONS AND REPORT ANY DISCREPANCIES TO THE CONSULTANT FOR FURTHER DIRECTION.
8. ON-SITE LAYOUT SHALL BE REVIEWED AND CONFIRMED BY THE CONTRACT ADMINISTRATOR PRIOR TO IMPLEMENTATION OF WORK.



1 NUSATSUM PARK - PLAYGROUND LAYOUT CONCEPT
SCALE 1:200

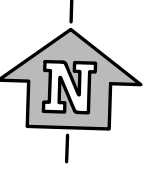
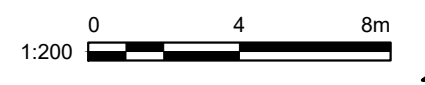


LEGEND

SYMBOL	DESCRIPTION
[Yellow dashed box]	PROPOSED PLAYGROUND AREA 300m MAX
[Yellow solid box]	PLAYGROUND SURFACE
[Grey dashed box]	ACCESSIBLE GRANULAR PATH
[Line with 'x']	CHAIN AND BOLLARD FENCE - BY PROPONENT
[Circle with dot]	SHADE TREE - OPTIONAL
[Red scalloped line]	TREE PROTECTION ZONE - DO NOT ENCROACH
[Green dashed circle]	EQUIPMENT - TO RETAIN
[Red 'X']	EQUIPMENT - TO REMOVE
[Pink box]	EXISTING SAFETY SURFACE - TO REMOVE
[Purple plus sign]	EQUIPMENT - TO REMOVE - OPTIONAL



2 NUSATSUM PARK - REMOVALS
SCALE 1:200



3 TIMBER EDGER WITH NATURAL BOULDER
NTS

PLAYGROUND CONCEPT NOTES

ALL OF THE CLAUSES STATED BELOW ARE THE MINIMUM STANDARD UNLESS A HIGHER STANDARD HAS BEEN INDICATED ELSEWHERE IN THE CONTRACT DOCUMENTS.

A. LAYOUT AND DESIGN

1. PLAYGROUND AREA IS SHOWN FOR REFERENCE ONLY
2. SHAPE TO BE DETERMINED BY PROPONENT DESIGN AND SUITED TO MEET EQUIPMENT REQUIREMENTS AND MINIMIZE COSTS TO OWNER
3. MAX AREA TO BE 300m sq
4. ORGANIC EDGE SHAPE PERMITTED
5. INNER EDGE OF TIMBER TO BE 0.2m MINIMUM FROM REQUIRED PLAY EQUIPMENT FALL ZONE
6. NATURAL BOULDERS TO BE USED BETWEEN TIMBER MEMBERS AND TO ACCOMMODATE ANGLED CONNECTIONS.
7. THE CONTRACTOR IS TO VERIFY ALL DIMENSIONS AND REPORT ANY DISCREPANCIES TO THE CONSULTANT FOR FURTHER DIRECTION.
8. ON-SITE LAYOUT SHALL BE REVIEWED AND CONFIRMED BY THE CONTRACT ADMINISTRATOR PRIOR TO IMPLEMENTATION OF WORK.

APPENDIX B

FORM OF CONTRACT

CCDC 14

**Design-Build
Stipulated Price Contract**

2 0 1 3

Name of Work

Apply a CCDC 14 copyright seal here. The application of the seal demonstrates the intention of the party proposing the use of this document that it be an accurate and unamended form of CCDC 14 – 2013 except to the extent that any alterations, additions or modifications are set forth in supplementary conditions.

The Canadian Construction Documents Committee (CCDC) is a national joint committee responsible for the development, production and review of standard Canadian construction contracts, forms and guides. Formed in 1974 the CCDC is made up of volunteer representatives from:

Public-Sector Owners

Private-Sector Owners

*The Association of Consulting Engineering Companies-Canada

*The Canadian Construction Association

*Construction Specifications Canada

*The Royal Architectural Institute of Canada

*Committee policy and procedures are directed and approved by the four constituent national organizations.

This document has also been endorsed by the Canadian Design-Build Institute.



Comments and inquiries should be directed to:
Canadian Construction Documents Committee
1900-275 Slater Street
Ottawa, ON
K1P 5H9
613 236-9455
info@ccdc.org
ccdc.org

CCDC guides are products of a consensus-building process aimed at balancing the interests of all parties on the construction project. They reflect recommended industry practices. Readers are cautioned that CCDC guides do not deal with any specific fact situation or circumstance. CCDC guides do not constitute legal or other professional advice. The CCDC and its constituent member organizations do not accept any responsibility or liability for loss or damage which may be suffered as a result of the use and interpretation of these guides.

CCDC Copyright 2013

Must not be copied in whole or in part without the written permission of the CCDC.



TABLE OF CONTENTS

AGREEMENT BETWEEN OWNER AND DESIGN-BUILDER

- A-1 Design Services and the Work
- A-2 Agreements and Amendments
- A-3 Contract Documents
- A-4 Contract Price
- A-5 Payment
- A-6 Receipt of and Addresses for Notices in Writing
- A-7 Language of the Contract
- A-8 Succession

DEFINITIONS

- Change Directive
- Change Order
- Construction Documents
- Construction Equipment
- Consultant
- Contract
- Contract Documents
- Contract Price
- Contract Time
- Design-Builder
- Design Services
- Drawings
- Notice in Writing
- Other Consultant
- Owner
- Owner's Advisor
- Owner's Statement of Requirements
- Payment Certifier
- Place of the Work
- Product
- Project
- Shop Drawings
- Specifications
- Subcontractor
- Substantial Performance of the Work
- Supplemental Instruction
- Supplier
- Temporary Work
- Value Added Taxes
- Work
- Working Day

GENERAL CONDITIONS OF THE DESIGN-BUILD STIPULATED PRICE CONTRACT

PART 1 GENERAL PROVISIONS

- GC 1.1 Contract Documents
- GC 1.2 Law of the Contract
- GC 1.3 Rights and Remedies
- GC 1.4 Assignment
- GC 1.5 Confidentiality

PART 2 OWNER'S RESPONSIBILITIES

- GC 2.1 Owner's Information
- GC 2.2 Role of the Owner
- GC 2.3 Owner's Advisor
- GC 2.4 Role of the Payment Certifier
- GC 2.5 Owner's Review of the Design and the Work
- GC 2.6 Work by Owner or Other Contractors

PART 3 DESIGN-BUILDER'S RESPONSIBILITIES

- GC 3.1 Control of the Design Services and the Work
- GC 3.2 Design-Builder's Review of Owner's Information
- GC 3.3 Role of the Consultant
- GC 3.4 Other Consultants, Subcontractors, and Suppliers
- GC 3.5 Construction Documents
- GC 3.6 Design Services and Work Schedule
- GC 3.7 Supervision
- GC 3.8 Labour and Products
- GC 3.9 Documents at the Site
- GC 3.10 Shop Drawings
- GC 3.11 Non-Conforming Design and Defective Work

PART 4 ALLOWANCES

- GC 4.1 Cash Allowances
- GC 4.2 Contingency Allowance

PART 5 PAYMENT

- GC 5.1 Financing Information Required of the Owner
- GC 5.2 Applications for Progress Payment
- GC 5.3 Progress Payment
- GC 5.4 Substantial Performance of the Work
- GC 5.5 Payment of Holdback upon Substantial Performance of the Work
- GC 5.6 Progressive Release of Holdback
- GC 5.7 Final Payment
- GC 5.8 Deferred Work
- GC 5.9 Non-conforming Design Services and Work

PART 6 CHANGES IN THE CONTRACT

- GC 6.1 Owner's Right to Make Changes
- GC 6.2 Change Order
- GC 6.3 Change Directive
- GC 6.4 Concealed or Unknown Conditions
- GC 6.5 Delays
- GC 6.6 Claims for a Change in Contract Price

PART 7 RIGHT TO SUSPEND OR TERMINATE

- GC 7.1 Owner's Right to Suspend the Design Services or Terminate the Contract Before the Work Commences
- GC 7.2 Owner's Right to Perform the Design Services or Work, Terminate the Design-Builder's Right to Continue with the Design Services or Work, or Terminate the Contract
- GC 7.3 Design-Builder's Right to Suspend the Design Services or Work, or Terminate the Contract

PART 8 DISPUTE RESOLUTION

- GC 8.1 Negotiation, Mediation and Arbitration
- GC 8.2 Retention of Rights

PART 9 PROTECTION OF PERSONS AND PROPERTY

- GC 9.1 Protection of Work and Property
- GC 9.2 Toxic and Hazardous Substances and Materials
- GC 9.3 Artifacts and Fossils
- GC 9.4 Construction Safety
- GC 9.5 Mould

PART 10 GOVERNING REGULATIONS

- GC 10.1 Taxes and Duties
- GC 10.2 Laws, Notices, Permits, and Fees
- GC 10.3 Patent Fees
- GC 10.4 Workers' Compensation

PART 11 INSURANCE AND CONTRACT SECURITY

- GC 11.1 Insurance
- GC 11.2 Contract Security

PART 12 INDEMNIFICATION, LIMITATION OF LIABILITY, WAIVER OF CLAIMS, AND WARRANTY

- GC 12.1 Definition and Survival
- GC 12.2 Indemnification
- GC 12.3 Limitation of Liability for Design Services
- GC 12.4 Waiver of Claims
- GC 12.5 Warranty

CCDC 14 is the product of a consensus-building process aimed at balancing the interests of all parties on the construction project. It reflects recommended industry practices. CCDC 14 can have important consequences. The CCDC and its constituent member organizations do not accept any responsibility or liability for loss or damage which may be suffered as a result of the use or interpretation of CCDC 14.

CCDC Copyright 2013

Must not be copied in whole or in part without the written permission of the CCDC.

AGREEMENT BETWEEN OWNER AND DESIGN-BUILDER

For use when a stipulated price is the basis of payment.

This Agreement made on the _____ day of _____ in the year _____ .

by and between the parties:

hereinafter called the "*Owner*"
and

hereinafter called the "*Design-Builder*"

The *Owner* and the *Design-Builder* agree as follows:

ARTICLE A-1 DESIGN SERVICES AND THE WORK

The *Design-Builder* shall:

- 1.1 provide the *Design Services*, and
- 1.2 perform the *Work* for

insert above the name of the Work

located at

insert above the Place of the Work

for which the Agreement has been signed by the parties, and for which

insert above the name of the Consultant

is acting as, and is hereinafter called, the "*Consultant*", and for which

insert above the name of the Payment Certifier

is acting as, and is hereinafter called the *Payment Certifier*, and for which

insert above the name of the Owner's Advisor

is acting as, and is hereinafter called the *Owner's Advisor**,
(*Strike out if none appointed)

Note: This contract is protected by copyright. Use of a CCDC 14 document not containing a CCDC 14 copyright seal constitutes an infringement of copyright. Only sign this contract if the document cover page bears a CCDC 14 copyright seal to demonstrate that it is intended by the parties to be an accurate and unamended version of CCDC 14 – 2013 except to the extent that any alterations, additions or modifications are set forth in supplementary conditions.

1.3 subject to adjustment in *Contract Time* as provided for in the *Contract Documents*, attain *Substantial Performance* of the *Work* by the _____ day of _____ in the year _____ .

ARTICLE A-2 AGREEMENTS AND AMENDMENTS

2.1 This *Contract* supersedes all prior negotiations, representations or agreements, either written or oral, including bidding documents that are not expressly listed in Article A-3 of the Agreement – CONTRACT DOCUMENTS.

2.2 This *Contract* may be amended only as provided for in the *Contract Documents*.

ARTICLE A-3 CONTRACT DOCUMENTS

3.1 The following are the *Contract Documents* referred to in Article A-1 of the Agreement – DESIGN SERVICES AND THE WORK:

- Agreement Between *Owner* and *Design-Builder*
- Definitions in this *Contract*
- General Conditions of this *Contract*
- *Owner's Statement of Requirements*, consisting of the following (list those written requirements and information constituting those documents intended to comprise the *Owner's Statement of Requirements*):

- *Construction Documents*

*

** (Insert here, attaching additional pages if required, a list identifying all other Contract Documents, e.g. Supplementary Conditions; Proposals; Specifications (giving a list of contents with section numbers and titles, number of pages, date and revision date(s), if any); Drawings (giving drawing number, title, date, revision date or mark); Addenda (giving title, number, date).*

Note: This contract is protected by copyright. Use of a CCDC 14 document not containing a CCDC 14 copyright seal constitutes an infringement of copyright. Only sign this contract if the document cover page bears a CCDC 14 copyright seal to demonstrate that it is intended by the parties to be an accurate and unamended version of CCDC 14 – 2013 except to the extent that any alterations, additions or modifications are set forth in supplementary conditions.

ARTICLE A-4 CONTRACT PRICE

4.1 The *Contract Price*, which excludes *Value Added Taxes*, is:
/100 dollars \$

4.2 *Value Added Taxes* (of _____ %) payable by the *Owner* to the *Design-Builder* are:
/100 dollars \$

4.3 Total amount payable by the *Owner* to the *Design-Builder* is:
/100 dollars \$

4.4 These amounts shall be subject to adjustments as provided in the *Contract Documents*.

4.5 Amounts are in Canadian funds.

ARTICLE A-5 PAYMENT

5.1 Subject to provisions of the *Contract Documents*, and in accordance with legislation and statutory regulations respecting holdback percentages and, where such legislation or regulations do not exist or apply, subject to a holdback of _____ percent (_____ %), the *Owner* shall:

- .1 make progress payments to the *Design-Builder* on account of the *Contract Price* when due in the amount certified by the *Payment Certifier*, together with such *Value Added Taxes* as may be applicable to such payment, and
- .2 upon *Substantial Performance of the Work*, pay to the *Design-Builder* the unpaid balance of the holdback amount when due, together with such *Value Added Taxes* as may be applicable to such payment, and
- .3 upon the issuance of the final certificate for payment, pay to the *Design-Builder* the unpaid balance of the *Contract Price* when due, together with such *Value Added Taxes* as may be applicable to such payment.

5.2 In the event of loss or damage occurring where payment becomes due under the property and boiler and machinery insurance policies, payments shall be made to the *Design-Builder* in accordance with the provisions of GC 11.1 – INSURANCE.

5.3 Interest

- .1 Should either party fail to make payments as they become due under the terms of the *Contract* or in an award by arbitration or court, interest at the following rates on such unpaid amounts shall also become due and payable until payment:
 - (1) 2% per annum above the prime rate for the first 60 days.
 - (2) 4% per annum above the prime rate after the first 60 days.

Such interest shall be compounded on a monthly basis. The prime rate shall be the rate of interest quoted by

(Insert name of chartered lending institution whose prime rate is to be used)
for prime business loans as it may change from time to time.

- .2 Interest shall apply at the rate and in the manner prescribed by paragraph 5.3.1 of this Article on the settlement amount of claims in dispute that are resolved either pursuant to Part 8 of the General Conditions – DISPUTE RESOLUTION or otherwise, from the date on which the amount would have been due and payable under the *Contract*, had it not been in dispute, until the date it is paid.

ARTICLE A-6 RECEIPT OF AND ADDRESSES FOR NOTICES IN WRITING

6.1 *Notices in Writing* will be addressed to the recipient at the address set out below.

6.2 The delivery of a *Notice in Writing* will be by hand, by courier, by prepaid first class mail, by facsimile or other form of electronic communication during the transmission of which no indication of failure of receipt is communicated to the sender.

Note: This contract is protected by copyright. Use of a CCDC 14 document not containing a CCDC 14 copyright seal constitutes an infringement of copyright. Only sign this contract if the document cover page bears a CCDC 14 copyright seal to demonstrate that it is intended by the parties to be an accurate and unamended version of CCDC 14 – 2013 except to the extent that any alterations, additions or modifications are set forth in supplementary conditions.

- 6.3 A *Notice in Writing* delivered by one party in accordance with this *Contract* will be deemed to have been received by the other party on the date of delivery if delivered by hand or courier, or if sent by mail it shall be deemed to have been received five calendar days after the date on which it was mailed, provided that if either such day is not a *Working Day*, then the *Notice in Writing* shall be deemed to have been received on the *Working Day* next following such day.
- 6.4 A *Notice in Writing* sent by facsimile or other form of electronic communication shall be deemed to have been received on the date of its transmission provided that if such day is not a *Working Day* or if it is received after the end of normal business hours on the date of its transmission at the place of receipt, then it shall be deemed to have been received at the opening of business at the place of receipt on the first *Working Day* next following the transmission.
- 6.5 An address for a party may be changed by *Notice in Writing* to the other party setting out the new address in accordance with this Article.

Owner

*name of Owner**

Address

facsimile number

email address

Design-Builder

*name of Design-Builder**

Address

facsimile number

email address

Owner's Advisor**

*name of Owner's Advisor**

Address

facsimile number

email address

* If it is intended that the notice must be received by a specific individual, indicate that individual's name.
 ** Strike out this entry if no Owner's Advisor is designated as per GC 2.3 – OWNER'S ADVISOR.

ARTICLE A-7 LANGUAGE OF THE CONTRACT

7.1 When the *Contract Documents* are prepared in both the English and French languages, it is agreed that in the event of any apparent discrepancy between the English and French versions, the English/French*** language shall prevail.

*** Complete this statement by striking out the inapplicable term.

Note: This contract is protected by copyright. Use of a CCDC 14 document not containing a CCDC 14 copyright seal constitutes an infringement of copyright. Only sign this contract if the document cover page bears a CCDC 14 copyright seal to demonstrate that it is intended by the parties to be an accurate and unamended version of CCDC 14 – 2013 except to the extent that any alterations, additions or modifications are set forth in supplementary conditions.

7.2 This Agreement is drawn in English at the request of the parties hereto. La présente convention est rédigée en anglais à la demande des parties.

ARTICLE A-8 SUCCESSION

8.1 This *Contract* shall enure to the benefit of and be binding upon the parties hereto, their respective heirs, legal representatives, successors, and permitted assigns.

In witness whereof the parties hereto have executed this Agreement by the hands of their duly authorized representatives.

SIGNED AND DELIVERED

in the presence of:

WITNESS

OWNER

name of Owner

signature

signature

name of person signing

name and title of person signing

signature

name of person signing

WITNESS

DESIGN-BUILDER

name of Design-Builder

signature

signature

name of person signing

name and title of person signing

signature

name of person signing

- N.B. Where legal jurisdiction, local practice, or Owner or Design-Builder requirement calls for:
- (a) proof of authority to execute this document, attach such proof of authority in the form of a certified copy of a resolution naming the representative(s) authorized to sign the Agreement for and on behalf of the corporation or partnership; or
 - (b) the affixing of a corporate seal, this Agreement should be properly sealed.

Note: This contract is protected by copyright. Use of a CCDC 14 document not containing a CCDC 14 copyright seal constitutes an infringement of copyright. Only sign this contract if the document cover page bears a CCDC 14 copyright seal to demonstrate that it is intended by the parties to be an accurate and unamended version of CCDC 14 – 2013 except to the extent that any alterations, additions or modifications are set forth in supplementary conditions.

DEFINITIONS

The following Definitions shall apply to all *Contract Documents*.

Change Directive

A *Change Directive* is a written instruction signed by the *Owner* directing a change in the *Work* or in the *Design Services* within the general scope of the *Contract Documents*.

Change Order

A *Change Order* is a written amendment to the *Contract* signed by the *Owner* and the *Design-Builder* stating their agreement upon:

- a change in the *Work* or in the *Design Services*;
- an amendment to the *Owner's Statement of Requirements*, if any;
- the method of adjustment or the amount of the adjustment in the *Contract Price*, if any; and
- the extent of the adjustment in the *Contract Time*, if any.

Construction Documents

The *Construction Documents* consist of *Drawings*, *Specifications*, and other documents prepared by or on behalf of the *Design-Builder*, based on the *Contract Documents*, and accepted in writing by the *Owner* and the *Design-Builder* as meeting the *Owner's Statement of Requirements* and the general intent of the *Contract Documents*.

Construction Equipment

Construction Equipment means machinery and equipment, either operated or not operated, that is required for preparing, fabricating, conveying, erecting, or otherwise performing the *Work* but is not incorporated into the *Work*.

Consultant

The *Consultant* is the person or entity identified as such in the Agreement. The *Consultant* is the architect, the engineer, or entity licensed to practise in the province or territory of the *Place of the Work* and engaged by the *Design-Builder* to provide all or part of the *Design Services*.

Contract

The *Contract* is the undertaking by the parties to perform their respective duties, responsibilities, and obligations as prescribed in the *Contract Documents* and represents the entire agreement between the parties.

Contract Documents

The *Contract Documents* consist of those documents listed in Article A-3 of the Agreement – CONTRACT DOCUMENTS and amendments thereto agreed upon between the parties.

Contract Price

The *Contract Price* is the amount stipulated in Article A-4 of the Agreement – CONTRACT PRICE.

Contract Time

The *Contract Time* is the time stipulated in paragraph 1.3 of Article A-1 of the Agreement – DESIGN SERVICES AND THE WORK from the date of the Agreement to the date of *Substantial Performance of the Work*.

Design-Builder

The *Design-Builder* is the person or entity identified as such in the Agreement.

Design Services

Design Services are the professional design and related services required by the *Contract Documents*.

Drawings

The *Drawings* are the graphic and pictorial portions of the *Construction Documents*, wherever located and whenever issued, showing the design, location and dimensions of the *Work*, generally including plans, elevations, sections, details, and diagrams.

Notice in Writing

A *Notice in Writing* is a written communication between the parties that is transmitted in accordance with the provisions of Article A-6 of the Agreement – RECEIPT OF AND ADDRESSES FOR NOTICES IN WRITING.

Other Consultant

Other Consultant is a person or entity, other than the *Consultant*, that may be engaged by the *Design-Builder* to perform part of the *Design Services*.

Owner

The *Owner* is the person or entity identified as such in the Agreement.

Note: This contract is protected by copyright. Use of a CCDC 14 document not containing a CCDC 14 copyright seal constitutes an infringement of copyright. Only sign this contract if the document cover page bears a CCDC 14 copyright seal to demonstrate that it is intended by the parties to be an accurate and unamended version of CCDC 14 – 2013 except to the extent that any alterations, additions or modifications are set forth in supplementary conditions.

Owner's Advisor

The *Owner's Advisor*, if any, is the person or entity appointed by the *Owner* and identified as such in the Agreement.

Owner's Statement of Requirements

The *Owner's Statement of Requirements* consists of written requirements and information provided by the *Owner* and as listed in Article A-3 of the Agreement – CONTRACT DOCUMENTS and amendments thereto agreed upon between the parties.

Payment Certifier

The *Payment Certifier* is the person or entity identified as such in the Agreement responsible for the issuance of certificates for payment.

Place of the Work

The *Place of the Work* is the designated site or location of the *Work* identified in the *Contract Documents*.

Product

Product or Products means material, machinery, equipment, and fixtures incorporated into the *Work*, but does not include *Construction Equipment*.

Project

The *Project* means the *Owner's* entire undertaking of which the *Work* may be the whole or a part thereof.

Shop Drawings

Shop Drawings are drawings, diagrams, illustrations, schedules, performance charts, brochures, *Product* data, and other data which the *Design-Builder* provides to illustrate details of portions of the *Work*.

Specifications

The *Specifications* are that portion of the *Construction Documents*, wherever located and whenever issued, consisting of the written requirements and standards for *Products*, systems, workmanship, quality, and the necessary services for the *Work*.

Subcontractor

A *Subcontractor* is a person or entity having a direct contract with the *Design-Builder* to perform a part or parts of the *Work* at the *Place of the Work*.

Substantial Performance of the Work

Substantial Performance of the Work is as defined in the lien legislation applicable to the *Place of the Work*. If such legislation is not in force or does not contain such definition, or if the *Work* is governed by the Civil Code of Quebec, *Substantial Performance of the Work* shall have been reached when the *Work* is ready for use or is being used for the purpose intended and is so certified by the *Payment Certifier*.

Supplemental Instruction

A *Supplemental Instruction* is an instruction, not involving adjustment in the *Contract Price* or *Contract Time*, in the form of *Specifications*, *Drawings*, schedules, samples, models or written instructions, consistent with the intent of the *Contract Documents*. It is to be issued by the *Owner* to supplement the *Contract Documents* as required for the performance of the *Work*.

Supplier

A *Supplier* is a person or entity having a direct contract with the *Design-Builder* to supply *Products*.

Temporary Work

Temporary Work means temporary supports, structures, facilities, services, and other temporary items, excluding *Construction Equipment*, required for the *Work* but not incorporated into the *Work*.

Value Added Taxes

Value Added Taxes means such sum as shall be levied upon the *Contract Price* by the federal or any provincial or territorial government and includes the Goods and Services Tax, the Quebec Sales Tax, the Harmonized Sales Tax, and any similar tax, the collection and payment of which have been imposed on the *Design-Builder* by tax legislation.

Work

The *Work* means the total construction and related services required by the *Contract Documents*, but does not include *Design Services*.

Working Day

Working Day means a day other than a Saturday, Sunday, statutory holiday, or statutory vacation day that is observed by the construction industry in the area of the *Place of the Work*.

Note: This contract is protected by copyright. Use of a CCDC 14 document not containing a CCDC 14 copyright seal constitutes an infringement of copyright. Only sign this contract if the document cover page bears a CCDC 14 copyright seal to demonstrate that it is intended by the parties to be an accurate and unamended version of CCDC 14 – 2013 except to the extent that any alterations, additions or modifications are set forth in supplementary conditions.

GENERAL CONDITIONS OF THE DESIGN-BUILD STIPULATED PRICE CONTRACT

PART 1 GENERAL PROVISIONS

GC 1.1 CONTRACT DOCUMENTS

- 1.1.1 The intent of the *Contract Documents* is to include the design, the labour, the *Products* and other services necessary for the design and performance of the *Work* by the *Design-Builder* in accordance with these documents. It is not intended, however, that the *Design-Builder* shall supply products or perform services or work not consistent with, not covered by, or not properly inferable from the *Contract Documents*.
- 1.1.2 Nothing contained in the *Contract Documents* shall create any contractual relationship between the *Owner* and the *Consultant*, an *Other Consultant*, a *Subcontractor*, a *Supplier*, or their agent, employee, or any other person performing any portion of the *Design Services* or the *Work*.
- 1.1.3 The *Contract Documents* are complementary, and what is required by any one shall be as binding as if required by all.
- 1.1.4 Words and abbreviations which have well known technical or trade meanings are used in the *Contract Documents* in accordance with such recognized meanings.
- 1.1.5 References in the *Contract Documents* to the singular shall be considered to include the plural as the context requires.
- 1.1.6 If there is a conflict within the *Contract Documents*:
- .1 the order of priority of documents, from highest to lowest, shall be
 - the Agreement between the *Owner* and the *Design-Builder*,
 - the Definitions,
 - Supplementary Conditions,
 - the General Conditions,
 - the *Owner's Statement of Requirements*,
 - the *Construction Documents*,
 - .2 later dated documents shall govern over earlier documents of the same type, and
 - .3 amendments to documents shall govern over documents so amended.
- 1.1.7 Copyright for the design and *Drawings* and electronic media, prepared on behalf of the *Design-Builder* belongs to the *Consultant* or *Other Consultants* who prepared them. Plans, sketches, *Drawings*, graphic representations, and *Specifications*, including, but not limited to computer generated designs, are instruments of the *Consultant's* or *Other Consultant's* services and shall remain their property, whether or not the *Work* for which they are made is executed and whether or not the *Design-Builder* has paid for the *Design Services*. Their alteration by the *Owner* is prohibited.
- 1.1.8 The *Owner* may retain copies, including reproducible copies, of plans, sketches, *Drawings*, graphic representations, and *Specifications* for information and reference in connection with the *Owner's* use and occupancy of the *Work*. Copies may only be used for the purpose intended and for a one time use, on the same site, and for the same *Project*. Except for reference purposes, the plans, sketches, *Drawings*, electronic files, graphic representations, and *Specifications* shall not be used for additions or alterations to the *Work* or on any other project without a written license from the *Consultant* or *Other Consultants* who prepared the documents, for their limited or repeat use.
- 1.1.9 The *Owner* shall be entitled to keep original models or renderings specifically commissioned and paid for.
- 1.1.10 Should the *Owner* alter a *Consultant's* or *Other Consultant's* instrument of service, or use or provide them to third parties other than in connection with the *Work* without informing the *Consultant* and without the *Consultant's* or *Other Consultant's* prior written consent, the *Owner* shall indemnify the *Design-Builder* against claims and costs (including legal costs) associated with such improper alteration or use.

GC 1.2 LAW OF THE CONTRACT

- 1.2.1 The law of the *Place of the Work* shall govern the interpretation of the *Contract*.

GC 1.3 RIGHTS AND REMEDIES

- 1.3.1 Except as expressly provided in the *Contract Documents*, the duties and obligations imposed by the *Contract Documents* and the rights and remedies available hereunder shall be in addition to and not a limitation of any duties, obligations, rights, and remedies otherwise imposed or available by law.

Note: This contract is protected by copyright. Use of a CCDC 14 document not containing a CCDC 14 copyright seal constitutes an infringement of copyright. Only sign this contract if the document cover page bears a CCDC 14 copyright seal to demonstrate that it is intended by the parties to be an accurate and unamended version of CCDC 14 – 2013 except to the extent that any alterations, additions or modifications are set forth in supplementary conditions.

- 1.3.2 No action or failure to act by the *Owner, Design-Builder, Consultant, Other Consultant, Payment Certifier, or Owner's Advisor* shall constitute a waiver of any right or duty afforded to either the *Owner* or the *Design-Builder* under the *Contract*, nor shall any such action or failure to act constitute an approval of or acquiescence in any breach thereunder, except as may be specifically agreed to in writing.

GC 1.4 ASSIGNMENT

- 1.4.1 Neither party to the *Contract* shall assign the *Contract* or a portion thereof without the prior written consent of the other, which consent shall not be unreasonably withheld.

GC 1.5 CONFIDENTIALITY

- 1.5.1 Where a confidentiality agreement exists or as the *Owner* otherwise expressly identifies and requires, the *Owner* and the *Design-Builder* shall keep confidential all matters respecting technical and commercial issues relating to or arising from the performance of the *Contract* and shall not, without the prior written consent of the other party, disclose any such matters, except in strict confidence, to their respective professional advisors.

PART 2 OWNER'S RESPONSIBILITIES

GC 2.1 OWNER'S INFORMATION

- 2.1.1 The *Owner* shall furnish the information required to complete the *Contract* promptly to avoid delay in the performance of the *Contract*.
- 2.1.2 Unless the *Contract Documents* specifically state otherwise, the *Design-Builder* is entitled to rely on the accuracy of all information provided by or on behalf of the *Owner* without regard for the source of such information.
- 2.1.3 Notwithstanding any other provision of the *Contract*, the *Design-Builder* is not responsible for any design errors or omissions in any designs or *Specifications* provided by or on behalf of the *Owner* unless the *Design-Builder* has been specifically requested to review and has accepted in writing those designs and *Specifications* under the *Contract*.

GC 2.2 ROLE OF THE OWNER

- 2.2.1 The *Owner* will render any necessary decisions or provide instructions promptly to avoid delay in the performance of the *Contract*.
- 2.2.2 All communications between the *Owner* and the *Consultant, an Other Consultant, a Subcontractor, or a Supplier* shall be forwarded through the *Design-Builder*.
- 2.2.3 The *Owner* will be, in the first instance, the interpreter of the requirements of the *Owner's Statement of Requirements*.
- 2.2.4 The *Owner* will have authority to reject by *Notice in Writing* design or work which in the *Owner's* opinion does not conform to the requirements of the *Owner's Statement of Requirements*.
- 2.2.5 Whenever the *Owner* considers it necessary or advisable, the *Owner* will have authority to require a review of the *Design Services* and inspection or testing of the *Work*, whether or not such work is fabricated, installed or completed, in accordance with paragraph 2.5.5 of GC 2.5 – OWNER'S REVIEW OF THE DESIGN AND THE WORK.
- 2.2.6 During the progress of the *Design Services* or of the *Work* the *Owner* will furnish *Supplemental Instructions* related to the *Owner's Statement of Requirements* to the *Design-Builder* with reasonable promptness or in accordance with a schedule for such instructions agreed to by the *Owner* and the *Design-Builder*.

GC 2.3 OWNER'S ADVISOR

- 2.3.1 When the *Owner* appoints an *Owner's Advisor*, the duties, responsibilities and limitations of authority of the *Owner's Advisor* shall be as set forth in the *Contract Documents*.
- 2.3.2 The duties, responsibilities and limitations of authority of the *Owner's Advisor* as set forth in the *Contract Documents* shall be modified or extended only with the written consent of the *Owner* and the *Design-Builder*.
- 2.3.3 Subject to any notified limitations in authority, the *Design-Builder* may rely upon any written instructions or directions provided by the *Owner's Advisor*. Neither the authority of the *Owner's Advisor* to act, nor any decision to exercise or not exercise such authority, shall give rise to any duty or responsibility of the *Owner's Advisor* to the *Design-Builder, the Consultant, Other Consultants, Subcontractors, Suppliers, or their agents, employees or other persons performing any portion of the Design Services or the Work*.

Note: This contract is protected by copyright. Use of a CCDC 14 document not containing a CCDC 14 copyright seal constitutes an infringement of copyright. Only sign this contract if the document cover page bears a CCDC 14 copyright seal to demonstrate that it is intended by the parties to be an accurate and unamended version of CCDC 14 – 2013 except to the extent that any alterations, additions or modifications are set forth in supplementary conditions.

- 2.3.4 If the employment of the *Owner's Advisor* is terminated, the *Owner* may appoint or reappoint an *Owner's Advisor* against whom the *Design-Builder* makes no reasonable objection and whose status under the *Contract Documents* shall be that of the former *Owner's Advisor*.

GC 2.4 ROLE OF THE PAYMENT CERTIFIER

- 2.4.1 The *Owner* shall designate a *Payment Certifier* who will review the *Design-Builder's* applications for payment and certify the value of the *Design Services* and of *Work* performed and *Products* delivered to the *Place of the Work*.
- 2.4.2 The duties, responsibilities and limitations of authority of the *Payment Certifier* as set forth in the *Contract Documents* shall be modified or extended only with the written consent of the *Owner* and the *Design-Builder*.
- 2.4.3 Neither the authority of the *Payment Certifier* to act nor any decision either to exercise or not to exercise such authority shall give rise to any duty or responsibility of the *Payment Certifier* to the *Design-Builder*, the *Consultant*, *Other Consultants*, *Subcontractors*, *Suppliers*, or their agents, employees or other persons performing any of the *Design Services* or the *Work*.
- 2.4.4 The *Payment Certifier* will take all reasonable steps to be accessible to the *Design-Builder* during performance of the *Contract* and shall render any necessary decisions or instructions promptly as provided in GC 5.3 – PROGRESS PAYMENT to avoid delay in the processing of payment claims.
- 2.4.5 Based on the *Payment Certifier's* observations and evaluation of the *Design-Builder's* applications for payment, the *Payment Certifier* will determine the amounts owing to the *Design-Builder* under the *Contract* and will issue certificates for payment as provided in Article A-5 of the Agreement – PAYMENT, GC 5.3 – PROGRESS PAYMENT and GC 5.7 – FINAL PAYMENT.
- 2.4.6 All communications between the *Payment Certifier* and the *Consultant*, an *Other Consultant*, a *Subcontractor*, or a *Supplier* shall be forwarded through the *Design-Builder*.
- 2.4.7 The *Payment Certifier* will promptly inform the *Owner* of the date of receipt of the *Design-Builder's* applications for payment as provided in paragraph 5.3.1.1 of GC 5.3 – PROGRESS PAYMENT.
- 2.4.8 If the *Payment Certifier's* services are terminated, the *Owner* shall immediately designate a new *Payment Certifier* against whom the *Design-Builder* makes no reasonable objection and whose status under the *Contract Documents* shall be that of the former *Payment Certifier*.
- 2.4.9 The *Owner* may provide to the *Consultant*, *Other Consultants*, *Subcontractors* or *Suppliers*, through the *Payment Certifier*, information as to the percentage of the *Design Services* and *Work* that has been certified for payment.

GC 2.5 OWNER'S REVIEW OF THE DESIGN AND THE WORK

- 2.5.1 The *Owner* shall review the design as set out in the design development documents and proposed *Construction Documents* as the *Design Services* proceed, to confirm that the design is in compliance with the *Owner's Statement of Requirements* and the *Contract Documents*.
- 2.5.2 The *Owner* shall complete the reviews in accordance with the schedule agreed upon, or in the absence of an agreed schedule, with reasonable promptness so as to cause no delay.
- 2.5.3 The *Owner's* review shall not relieve the *Design-Builder* of responsibility for errors or omissions in the *Construction Documents* or for meeting all requirements of the *Contract Documents* unless the *Owner* accepts in writing a deviation from the *Contract Documents*.
- 2.5.4 No later than 10 days after completing the review, the *Owner* shall advise the *Design-Builder* in writing that the *Owner* has accepted or rejected the proposed *Construction Documents*. If rejected, the *Owner* shall inform the *Design-Builder* of the reasons of non-conformance and the *Design-Builder* shall revise the proposed *Construction Documents* to address such non-conformance. The *Design-Builder* shall inform the *Owner* in writing of any revisions other than those requested by the *Owner*.
- 2.5.5 The *Owner* may order any portion or portions of the *Work* to be examined to confirm that the *Work* performed is in accordance with the requirements of the *Contract Documents*. If the *Work* is not in accordance with the requirements of the *Contract Documents*, the *Design-Builder* shall correct the *Work* and pay the cost of examination and correction. If the *Work* is in accordance with the requirements of the *Contract Documents*, the *Owner* shall pay all costs incurred by the *Design-Builder* as a result of such examination and restoration.

Note: This contract is protected by copyright. Use of a CCDC 14 document not containing a CCDC 14 copyright seal constitutes an infringement of copyright. Only sign this contract if the document cover page bears a CCDC 14 copyright seal to demonstrate that it is intended by the parties to be an accurate and unamended version of CCDC 14 – 2013 except to the extent that any alterations, additions or modifications are set forth in supplementary conditions.

GC 2.6 WORK BY OWNER OR OTHER CONTRACTORS

- 2.6.1 The *Owner* reserves the right to award separate contracts in connection with other parts of the *Project* to other contractors and to perform other design or other work with its own forces.
- 2.6.2 When separate contracts are awarded for other parts of the *Project*, or when work is performed by the *Owner's* own forces, the *Owner* shall:
- .1 provide for the co-ordination of the activities and work of other contractors and *Owner's* own forces with the *Design Services* and the *Work*;
 - .2 assume overall responsibility for compliance with the applicable health and construction safety legislation at the *Place of the Work*;
 - .3 enter into separate contracts with other contractors under conditions of contract which are compatible with the conditions of the *Contract*;
 - .4 ensure that insurance coverage is provided to the same requirements as are called for in GC 11.1 – INSURANCE and co-ordinate such insurance with the insurance coverage of the *Design-Builder* as it affects the *Design Services* and the *Work*; and
 - .5 take all reasonable precautions to avoid labour disputes or other disputes on the *Project* arising from the work of other contractors or the *Owner's* own forces.
- 2.6.3 When separate contracts are awarded for other parts of the *Project*, or when work is performed by the *Owner's* own forces, the *Design-Builder* shall:
- .1 afford the *Owner* and other contractors reasonable opportunity to store their products and execute their work;
 - .2 cooperate with other contractors and the *Owner* in reviewing their construction schedules; and
 - .3 promptly report to the *Owner* in writing any apparent deficiencies in the work of other contractors or of the *Owner's* own forces, where such work affects the proper execution of any portion of the *Design Services* or of the *Work*, prior to proceeding with that portion of the *Design Services* or of the *Work*.
- 2.6.4 Where the *Contract Documents* identify work to be performed by other contractors or the *Owner's* own forces, the *Design-Builder* shall co-ordinate and schedule the *Design Services* and the *Work* with the work of other contractors and the *Owner's* own forces as specified in the *Contract Documents*.
- 2.6.5 Where a change in the *Design Services* or in the *Work* is required as a result of the co-ordination and integration of the work of other contractors or *Owner's* own forces with the *Design Services* or with the *Work*, the changes shall be authorized and valued as provided in GC 6.1 – OWNER'S RIGHT TO MAKE CHANGES, GC 6.2 – CHANGE ORDER and GC 6.3 – CHANGE DIRECTIVE.
- 2.6.6 Disputes and other matters in question between the *Design-Builder* and the *Owner's* other contractors shall be dealt with as provided in Part 8 of the General Conditions – DISPUTE RESOLUTION provided the other contractors have reciprocal obligations. The *Design-Builder* shall be deemed to have consented to arbitration of any dispute with any other contractor whose contract with the *Owners* contains a similar agreement to arbitrate.

PART 3 DESIGN-BUILDER'S RESPONSIBILITIES

GC 3.1 CONTROL OF THE DESIGN SERVICES AND THE WORK

- 3.1.1 The *Design-Builder* shall have total control of the *Design Services* and of the *Work* and shall direct and supervise the *Design Services* and the *Work* so as to ensure conformity with the *Contract Documents*.
- 3.1.2 The *Design-Builder* shall be solely responsible for the *Design Services* and construction means, methods, techniques, sequences, and procedures with respect to the *Work*.
- 3.1.3 The *Design-Builder* shall preserve and protect the rights of the parties under the *Contract* with respect to the *Design Services* to be performed by the *Consultant* and *Other Consultants*, and shall enter into a contract with the *Consultant* and *Other Consultants* to perform *Design Services* as provided in the *Contract*, in accordance with laws applicable at the *Place of the Work*.
- 3.1.4 The *Design-Builder's* contract with the *Consultant* shall:
- .1 be based on the version of CCDC 15 – Design Services Contract between Design-Builder and Consultant in effect as at the date of this *Contract* or incorporate terms and conditions consistent with this version of CCDC 15, and
 - .2 incorporate terms and conditions of the *Contract Documents*, insofar as they are applicable.
- 3.1.5 Upon the *Owner's* request, the *Design-Builder* shall promptly provide the *Owner* with proof of compliance with paragraph 3.1.4.

Note: This contract is protected by copyright. Use of a CCDC 14 document not containing a CCDC 14 copyright seal constitutes an infringement of copyright. Only sign this contract if the document cover page bears a CCDC 14 copyright seal to demonstrate that it is intended by the parties to be an accurate and unamended version of CCDC 14 – 2013 except to the extent that any alterations, additions or modifications are set forth in supplementary conditions.

- 3.1.6 The *Design-Builder* shall be as fully responsible to the *Owner* for acts and omissions of the *Consultant* and *Other Consultants*, and of persons directly or indirectly employed by the *Consultant* and *Other Consultants*, as for acts and omissions of persons directly employed by the *Design-Builder*.
- 3.1.7 The *Design-Builder's* responsibility for *Design Services* performed by the *Consultant* and *Other Consultants* shall be limited to the degree of care, skill and diligence normally provided by consultants in the performance of comparable services in respect of projects of a similar nature to that contemplated by this *Contract*. The *Design-Builder* shall ensure that the *Consultant* and *Other Consultants* perform the *Design Services* to this standard.
- 3.1.8 The *Design-Builder* shall ensure that the *Consultant* and *Other Consultants* provide documentation required by authorities having jurisdiction in accordance with regulations and by-laws in effect at the *Place of the Work*.
- 3.1.9 The *Design-Builder* is solely responsible for the quality of the *Design Services* and of the *Work* and shall undertake any quality control activities specified in the *Contract Documents* or, if none are specified, as may be reasonably required to ensure such quality.
- 3.1.10 The *Design Builder* shall provide access to the *Work*, including parts being performed at locations other than the *Place of the Work* and to the location where the *Design Services* are performed, that the *Owner*, or the *Payment Certifier* may reasonably require to verify the progress of the *Work* or *Design Services* and their conformity to the requirements of the *Contract Documents*. The *Design-Builder* shall also provide sufficient, safe, and proper facilities at all times for such reviews of the *Design Services* or the *Work* and for inspection of the *Work* by authorized agencies.
- 3.1.11 If work is designated for tests, inspections, or approvals in the *Contract Documents*, or by the instructions of the *Owner*, the *Consultant*, or *Other Consultants*, or the laws or ordinances of the *Place of the Work*, the *Design-Builder* shall give the *Owner* reasonable notice of when the work will be ready for review and inspection.
- 3.1.12 The *Design-Builder* shall arrange for and shall give the *Owner* reasonable notice of the date and time of inspections by other authorities.
- 3.1.13 If the *Design-Builder* covers, or permits to be covered, work that has been designated for special tests, inspections, or approvals before such special tests, inspections, or approvals are made, given or, completed, the *Design-Builder* shall, if so directed, uncover such work, have the inspections or tests satisfactorily completed, and restore the covering work at the *Design-Builder's* expense.
- 3.1.14 The *Design-Builder* shall furnish promptly to the *Owner*, on request, a copy of certificates, test reports and inspection reports relating to the *Work*.

GC 3.2 DESIGN-BUILDER'S REVIEW OF OWNER'S STATEMENT OF REQUIREMENTS OR OTHER INFORMATION

- 3.2.1 The *Design-Builder* shall promptly notify the *Owner* of any significant error, inconsistency, or omission discovered in the *Owner's Statement of Requirements* or other information provided by or on behalf of the *Owner*. The *Design-Builder* shall not proceed with the *Design Services* or *Work* affected until the *Design-Builder* and the *Owner* have agreed in writing how the information should be corrected or supplied.
- 3.2.2 The *Design-Builder* shall not be liable for damages or costs resulting from such errors, inconsistencies, or omissions in the *Owner's Statement of Requirements* or other information provided by or on behalf of the *Owner*.

GC 3.3 ROLE OF THE CONSULTANT

- 3.3.1 The *Consultant* or *Other Consultants* will be, in the first instance, the interpreter of the requirements of the *Construction Documents* that they have prepared.
- 3.3.2 The duties, responsibilities and limitations of authority of the *Consultant* shall be in accordance with paragraph 3.1.4 of GC 3.1 – CONTROL OF THE DESIGN SERVICES AND THE WORK and shall be modified only with the written consent of the *Owner*, which consent shall not be unreasonably withheld.
- 3.3.3 If the *Consultant's* engagement is terminated, the *Design-Builder* shall immediately appoint or reappoint a *Consultant* against whom the *Owner* makes no reasonable objection and whose status under the *Contract Documents* shall be that of the former *Consultant*.

Note: This contract is protected by copyright. Use of a CCDC 14 document not containing a CCDC 14 copyright seal constitutes an infringement of copyright. Only sign this contract if the document cover page bears a CCDC 14 copyright seal to demonstrate that it is intended by the parties to be an accurate and unamended version of CCDC 14 – 2013 except to the extent that any alterations, additions or modifications are set forth in supplementary conditions.

GC 3.4 OTHER CONSULTANTS, SUBCONTRACTORS AND SUPPLIERS

- 3.4.1 The *Design-Builder* shall preserve and protect the rights of the parties under the *Contract* with respect to work to be performed under subcontract, and shall:
1. enter into contracts or written agreements with *Other Consultants* to require them to perform *Design Services* as provided in the *Contract Documents*;
 2. enter into contracts or written agreements with *Subcontractors* and *Suppliers* to require them to perform *Work* as required by the *Contract Documents*;
 3. incorporate the terms and conditions of the *Contract Documents* into all contracts or written agreements with *Other Consultants*, *Subcontractors* and *Suppliers* insofar as they are applicable; and
 4. be as fully responsible to the *Owner* for acts and omissions of *Other Consultants*, *Subcontractors*, *Suppliers* and of persons directly or indirectly employed by them as for acts and omissions of persons directly employed by the *Design-Builder*.
- 3.4.2 The *Design-Builder* shall indicate in writing, at the request of the *Owner*, the names of *Other Consultants*, *Subcontractors*, or *Suppliers* whose proposals or bids have been received by the *Design-Builder* which the *Design-Builder* would be prepared to accept for the performance of a portion of the *Design Services* or of the *Work*. Should the *Owner* not object before signing the subcontract, the *Design-Builder* shall employ *Other Consultants*, *Subcontractors* or *Suppliers* so identified by the *Design-Builder* in writing for the performance of that portion of the *Design Services* or of the *Work* to which their proposal or bid applies.
- 3.4.3 The *Owner* may, for reasonable cause, at any time before the *Design-Builder* has signed the subcontract, object to the use of a proposed *Other Consultant*, *Subcontractor* or *Supplier* and require the *Design-Builder* to employ another proposed *Other Consultant*, *Subcontractor* or *Supplier* bidder.
- 3.4.4 If the *Owner* requires the *Design-Builder* to change a proposed *Other Consultant*, *Subcontractor* or *Supplier*, the *Contract Price* and *Contract Time* shall be adjusted by the differences resulting from such required change.
- 3.4.5 The *Design-Builder* shall not be required to employ any *Subcontractor*, *Supplier*, *Other Consultant*, person or firm to whom the *Design-Builder* may reasonably object.

GC 3.5 CONSTRUCTION DOCUMENTS

- 3.5.1 The *Design-Builder* shall submit the proposed *Construction Documents* to the *Owner* to review in orderly sequence and sufficiently in advance so as to cause no delay. The *Owner* and the *Design-Builder* shall jointly prepare a schedule of the dates for submission and return of proposed *Construction Documents*.
- 3.5.2 During the progress of the *Design Services*, the *Design-Builder* shall furnish to the *Owner* documents that describe details of the design required by the *Contract Documents*.
- 3.5.3 At the time of submission the *Design-Builder* shall advise the *Owner* in writing of any significant deviations in the proposed *Construction Documents* from the requirements of the *Contract Documents*. The *Owner* may or may not accept such deviations. Accepted deviations from the *Owner's Statement of Requirements* will be recorded in a *Change Order*.
- 3.5.4 When a change is required to the *Construction Documents* it shall be made in accordance with GC 6.1 – OWNER'S RIGHT TO MAKE CHANGES, GC 6.2 – CHANGE ORDER, or GC 6.3 – CHANGE DIRECTIVE.

GC 3.6 DESIGN SERVICES AND WORK SCHEDULE

- 3.6.1 The *Design-Builder* shall:
- .1 promptly after signing the Agreement, prepare and submit to the *Owner* a *Design Services* and *Work* schedule that indicates the timing of the major activities of the *Design Services* and of the *Work* and provides sufficient detail of the critical events and their inter-relationship to demonstrate that the *Design Services* and the *Work* will be performed in conformity with the schedule;
 - .2 monitor the progress of the *Design Services* and of the *Work* relative to the schedule and update the schedule on a monthly basis or as stipulated by the *Contract Documents*; and
 - .3 advise the *Owner* of any revisions required to the schedule as a result of extensions to the *Contract Time* as provided in Part 6 of the General Conditions – CHANGES IN THE CONTRACT.

Note: This contract is protected by copyright. Use of a CCDC 14 document not containing a CCDC 14 copyright seal constitutes an infringement of copyright. Only sign this contract if the document cover page bears a CCDC 14 copyright seal to demonstrate that it is intended by the parties to be an accurate and unamended version of CCDC 14 – 2013 except to the extent that any alterations, additions or modifications are set forth in supplementary conditions.

GC 3.7 SUPERVISION

- 3.7.1 The *Design-Builder* shall provide all necessary supervision and appoint a competent representative who shall be in attendance at the *Place of the Work* while work is being performed. The appointed representative shall not be changed except for valid reason.
- 3.7.2 The appointed representative shall represent the *Design-Builder* at the *Place of the Work*. Information and instructions provided by the *Owner* to the *Design-Builder's* appointed representative shall be deemed to have been received by the *Design-Builder* except that *Notices in Writing* otherwise required under the *Contract* shall be given as indicated in Article A-6 of the Agreement – RECEIPT OF AND ADDRESSES FOR NOTICES IN WRITING.

GC 3.8 LABOUR AND PRODUCTS

- 3.8.1 The *Design-Builder* shall provide and pay for labour, *Products*, tools, *Construction Equipment*, water, heat, light, power, transportation, and other facilities and services necessary for the performance of the *Work* in accordance with the *Contract*.
- 3.8.2 Unless otherwise specified in the *Contract Documents*, *Products* provided shall be new. *Products* which are not specified shall be of a quality consistent with the *Contract Documents* and their use acceptable to the *Owner*.
- 3.8.3 The *Design-Builder* shall maintain good order and discipline among the *Design-Builder's* employees involved in the performance of the *Work* and shall not employ anyone not skilled in the tasks assigned.

GC 3.9 DOCUMENTS AT THE SITE

- 3.9.1 The *Design-Builder* shall keep one copy of current *Owner's Statement of Requirements*, *Construction Documents*, *Shop Drawings*, reports, and records of meetings at the *Place of the Work*, in good order and available to the *Owner*.

GC 3.10 SHOP DRAWINGS

- 3.10.1 The *Design-Builder* shall provide *Shop Drawings* as described in the *Contract Documents* or as the *Owner* may reasonably request.
- 3.10.2 *Shop Drawings* which require approval of any legally constituted authority having jurisdiction shall be provided to such authority by the *Design-Builder* for approval.
- 3.10.3 The *Design-Builder* shall review all *Shop Drawings* before providing them to the *Owner*. The *Design-Builder* represents by this review that the *Design-Builder* has:
- .1 determined and verified all applicable field measurements, field construction conditions, *Product* requirements, catalogue numbers and similar data, or will do so, and
 - .2 checked and co-ordinated each *Shop Drawing* with the requirements of the *Contract Documents*.
- 3.10.4 If the *Owner* requests to review shop drawings, the *Design-Builder* shall submit them in an orderly sequence and sufficiently in advance so as to cause no delay in the *Design Services* or the *Work* or in the work of other contractors. The *Owner* and the *Design-Builder* shall jointly prepare a schedule of the dates for submission and return of *Shop Drawings*.
- 3.10.5 The *Owner's* review under paragraph 3.10.4 is for conformity to the intent of the *Contract Documents* and for general arrangement only. The *Owner's* review shall not relieve the *Design-Builder* of the responsibility for errors or omissions in the *Shop Drawings* or for meeting all requirements of the *Contract Documents* unless the *Owner* expressly accepts a deviation from the *Contract Documents* by *Change Order*.

GC 3.11 NON-CONFORMING DESIGN AND DEFECTIVE WORK

- 3.11.1 Where the *Owner* has advised the *Design-Builder*, by *Notice in Writing*, that designs or *Specifications* fail to comply with the *Owner's Statement of Requirements*, the *Design-Builder* shall ensure that the design documents or proposed *Construction Documents* are promptly corrected or altered.
- 3.11.2 The *Design-Builder* shall promptly correct defective work that has been rejected by *Notice in Writing* by the *Owner* as failing to conform to the *Contract Documents* whether or not the defective work has been incorporated in the *Work* and whether or not the defect is the result of poor workmanship, design, use of defective products, or damage through carelessness or other act or omission of the *Design-Builder*.
- 3.11.3 The *Design-Builder* shall promptly make good other contractors' work destroyed or damaged by such removals or replacements at the *Design-Builder's* expense.

Note: This contract is protected by copyright. Use of a CCDC 14 document not containing a CCDC 14 copyright seal constitutes an infringement of copyright. Only sign this contract if the document cover page bears a CCDC 14 copyright seal to demonstrate that it is intended by the parties to be an accurate and unamended version of CCDC 14 – 2013 except to the extent that any alterations, additions or modifications are set forth in supplementary conditions.

- 3.11.4 If, in the opinion of the *Owner*, it is not expedient to correct defective work or work not performed as provided in the *Contract Documents*, the *Owner* may deduct from the amount otherwise due to the *Design-Builder* the difference in value between the work as performed and that called for by the *Contract Documents*. If the *Design-Builder* does not agree on the difference in value, the *Design-Builder* shall refer the dispute to Part 8 of the General Conditions – DISPUTE RESOLUTION.

PART 4 ALLOWANCES

GC 4.1 CASH ALLOWANCES

- 4.1.1 The *Contract Price* includes the cash allowances, if any, stated in the *Owner's Statement of Requirements*. The scope of work or costs included in such cash allowances shall be as described in the *Owner's Statement of Requirements*.
- 4.1.2 The *Contract Price*, and not the cash allowances, includes the *Design-Builder's* overhead and profit in connection with such cash allowances.
- 4.1.3 Expenditures under cash allowances shall be authorized by the *Owner*.
- 4.1.4 Where the actual cost of the work performed under any cash allowance exceeds the amount of the allowance, the *Design-Builder* shall be compensated for the excess incurred and substantiated plus an amount for overhead and profit on the excess as set out in the *Contract Documents*. Where the actual cost of the work performed under any cash allowance is less than the amount of the allowance, the *Owner* shall be credited for the unexpended portion of the cash allowance, but not for the *Design-Builder's* overhead and profit on such amount. Multiple cash allowances shall not be combined for the purpose of calculating the foregoing.
- 4.1.5 The *Contract Price* shall be adjusted by *Change Order* to provide for any difference between each cash allowance and the actual cost of the work performed under that cash allowance.
- 4.1.6 The value of the work performed under a cash allowance is eligible to be included in progress payments.
- 4.1.7 The *Design-Builder* and the *Owner* shall jointly prepare a schedule that shows when the *Owner* must authorize ordering of items called for under cash allowances to avoid delaying the progress of the *Design Services* or of the *Work*.

GC 4.2 CONTINGENCY ALLOWANCE

- 4.2.1 The *Contract Price* includes the contingency allowance, if any, stated in the *Owner's Statement of Requirements*.
- 4.2.2 The contingency allowance includes the *Design-Builder's* overhead and profit in connection with such contingency allowance.
- 4.2.3 Expenditures under the contingency allowance shall be authorized and valued as provided in GC 6.1 – OWNER'S RIGHT TO MAKE CHANGES, GC 6.2 – CHANGE ORDER and GC 6.3 – CHANGE DIRECTIVE.
- 4.2.4 The *Contract Price* shall be adjusted by *Change Order* to provide for any difference between the expenditures authorized under paragraph 4.2.3 and the contingency allowance.

PART 5 PAYMENT

GC 5.1 FINANCING INFORMATION REQUIRED OF THE OWNER

- 5.1.1 The *Owner* shall, at the request of the *Design-Builder*, before signing the *Contract*, and promptly from time to time thereafter, furnish to the *Design-Builder* reasonable evidence that financial arrangements have been made to fulfill the *Owner's* obligations under the *Contract*.
- 5.1.2 The *Owner* shall give the *Design-Builder Notice in Writing* of any material change in the *Owner's* financial arrangements to fulfill the *Owner's* obligations under the *Contract* during the performance of the *Contract*.

GC 5.2 APPLICATIONS FOR PROGRESS PAYMENT

- 5.2.1 Applications for payment on account as provided in Article A-5 of the Agreement – PAYMENT may be made monthly as the *Design Services* and the *Work* progress.
- 5.2.2 Applications for payment shall be dated the last day of each payment period, which is the last day of the month or an alternative day of the month agreed to in writing by the parties.
- 5.2.3 The amount claimed shall be for the value, proportionate to the amount of the *Contract*, of the *Design Services* and of the *Work* performed and *Products* delivered to the *Place of the Work* as of the last day of the payment period.

Note: This contract is protected by copyright. Use of a CCDC 14 document not containing a CCDC 14 copyright seal constitutes an infringement of copyright. Only sign this contract if the document cover page bears a CCDC 14 copyright seal to demonstrate that it is intended by the parties to be an accurate and unamended version of CCDC 14 – 2013 except to the extent that any alterations, additions or modifications are set forth in supplementary conditions.

- 5.2.4 The *Design-Builder* shall submit to the *Payment Certifier*, at least 15 calendar days before the first application for payment, a schedule of values for the parts of the *Design Services* and of the *Work*, aggregating the total amount of the *Contract Price*, so as to facilitate evaluation of applications for payment.
- 5.2.5 The schedule of values shall be made out in such form and supported by such evidence as the *Payment Certifier* may reasonably direct, and when accepted by the *Payment Certifier*, shall be used as the basis for applications for payment unless it is found to be in error.
- 5.2.6 The *Design-Builder* shall include a statement based on the schedule of values with each application for payment.
- 5.2.7 A declaration by the *Design-Builder* as to the distribution made of the amounts received using document CCDC 9A – Statutory Declaration of Progress Payment Distribution by Contractor shall be joined to each application for progress payment except the first one.
- 5.2.8 Applications for payment for *Products* delivered to the *Place of the Work* but not yet incorporated into the *Work* shall be supported by such evidence as the *Payment Certifier* may reasonably require to establish the value and delivery of the *Products*.

GC 5.3 PROGRESS PAYMENT

- 5.3.1 After receipt by the *Payment Certifier* of an application for payment submitted by the *Design-Builder* in accordance with GC 5.2 – APPLICATIONS FOR PROGRESS PAYMENT:
- .1 the *Payment Certifier* will promptly inform the *Owner* of the date of receipt and value of the *Design-Builder's* application for payment,
 - .2 the *Payment Certifier* will issue to the *Owner* and copy to the *Design-Builder*, no later than 10 calendar days after the receipt of the application for payment, a certificate for payment in the amount applied for, or in such other amount as the *Payment Certifier* determines to be properly due. If the *Payment Certifier* amends the application, the *Payment Certifier* will promptly advise the *Design-Builder* in writing giving reasons for the amendment,
 - .3 the *Owner* shall make payment to the *Design-Builder* on account as provided in Article A-5 of the Agreement – PAYMENT on or before 20 calendar days after the later of:
 - receipt by the *Payment Certifier* of the application for payment, or
 - the last day of the monthly payment period for which the application for payment is made.

GC 5.4 SUBSTANTIAL PERFORMANCE OF THE WORK

- 5.4.1 When the *Design-Builder* considers that the *Work* is substantially performed or, if permitted by the lien legislation applicable at the *Place of the Work*, a designated portion thereof which the *Owner* agrees to accept separately is substantially performed, the *Design-Builder* shall prepare and submit to the *Payment Certifier* appropriate documents as required by the *Contract Documents* together with a written application for a review by the *Payment Certifier* to establish *Substantial Performance of the Work* or substantial performance of the designated portion of the *Work*. Failure to include this information does not alter the responsibility of the *Design-Builder* to complete the *Contract*.
- 5.4.2 The *Design-Builder's* application for *Substantial Performance of the Work* shall include a statement from the *Consultant*, and *Other Consultants* in support of the submitted information and the date of *Substantial Performance of the Work* or designated portion of the *Work*.
- 5.4.3 The *Payment Certifier* shall, within 7 calendar days after receipt of the *Design-Builder's* application for *Substantial Performance of the Work*, issue a certificate of the *Substantial Performance of the Work* which shall state the date of *Substantial Performance of the Work* or designated portion thereof or advise the *Design-Builder* in writing of the reasons for which such a certificate is not issued.
- 5.4.4 If the applicable lien legislation requires the *Consultant* to determine whether the *Work* has been substantially performed, the *Consultant* shall issue a certificate of the *Substantial Performance of the Work* which shall state the date of *Substantial Performance of the Work* or designated portion of the *Work* or advise the *Design-Builder* in writing of the reasons for which such a certificate is not issued.
- 5.4.5 Immediately following the issuance of the certificate of *Substantial Performance of the Work*, the *Design-Builder*, in consultation with the *Owner* will establish a reasonable date for completing the *Work*.

GC 5.5 PAYMENT OF HOLDBACK UPON SUBSTANTIAL PERFORMANCE OF THE WORK

- 5.5.1 After the issuance of the certificate of *Substantial Performance of the Work*, the *Design-Builder* shall:
- .1 submit an application for payment of the holdback amount,
 - .2 submits a CCDC 9A Statutory Declaration of Progress Payment Distribution by Contractor.

Note: This contract is protected by copyright. Use of a CCDC 14 document not containing a CCDC 14 copyright seal constitutes an infringement of copyright. Only sign this contract if the document cover page bears a CCDC 14 copyright seal to demonstrate that it is intended by the parties to be an accurate and unamended version of CCDC 14 – 2013 except to the extent that any alterations, additions or modifications are set forth in supplementary conditions.

- 5.5.2 After the receipt of an application for payment from the *Design-Builder* and the statement as provided in paragraph 5.5.1, the *Payment Certifier* will issue a certificate for payment of the holdback amount.
- 5.5.3 Where the holdback amount required by the applicable lien legislation has not been placed in a separate holdback account, the *Owner* shall, 10 calendar days prior to the expiry of the holdback period stipulated in the lien legislation applicable to the *Place of the Work*, place the holdback amount in a bank account in the joint names of the *Owner* and the *Design-Builder*.
- 5.5.4 In the common law jurisdictions, the holdback amount authorized by the certificate for payment of the holdback amount is due and payable on the calendar day following the expiration of the holdback period stipulated in the lien legislation applicable to the *Place of the Work*. Where lien legislation does not exist or apply, the holdback amount shall be due and payable in accordance with other legislation, industry practice or provisions which may be agreed to between the parties. The *Owner* may retain out of the holdback amount any sums required by law to satisfy any liens against the *Work* or, if permitted by the lien legislation applicable to the *Place of the Work*, other third party monetary claims against the *Design-Builder* which are enforceable against the *Owner*.
- 5.5.5 In the Province of Quebec, the holdback amount authorized by the certificate for payment of the holdback amount is due and payable 30 calendar days after the issuance of the certificate. The *Owner* may retain out of the holdback amount any sums required to satisfy any legal hypothecs that have been taken, or could be taken, against the *Work* or other third party monetary claims against the *Design-Builder* which are enforceable against the *Owner*.

GC 5.6 PROGRESSIVE RELEASE OF HOLDBACK

- 5.6.1 In the common law jurisdictions, where legislation permits and where, upon application by the *Design-Builder*, the *Payment Certifier* has certified that the work of a *Subcontractor* or *Supplier* has been performed prior to *Substantial Performance of the Work*, the *Owner* shall pay the *Design-Builder* the holdback amount retained for such subcontract work, or the *Products* supplied by such *Supplier*, on the first calendar day following the expiration of the holdback period for such work stipulated in the lien legislation applicable to the *Place of the Work*. The *Owner* may retain out of the holdback amount any sums required by law to satisfy any liens against the *Work* or, if permitted by the lien legislation applicable to the *Place of the Work*, other third party monetary claims against the *Design-Builder* which are enforceable against the *Owner*.
- 5.6.2 In the Province of Quebec, where, upon application by the *Design-Builder*, the *Payment Certifier* has certified that the work of a *Subcontractor* or *Supplier* has been performed prior to *Substantial Performance of the Work*, the *Owner* shall pay the *Design-Builder* the holdback amount retained for such subcontract work, or the *Products* supplied by such *Supplier*, no later than 30 calendar days after such certification by the *Payment Certifier*. The *Owner* may retain out of the holdback amount any sums required to satisfy any legal hypothecs that have been taken, or could be taken, against the *Work* or other third party monetary claims against the *Design-Builder* which are enforceable against the *Owner*.
- 5.6.3 Notwithstanding the provisions of the preceding paragraphs, and notwithstanding the wording of such certificates, the *Design-Builder* shall ensure that such subcontract work or *Products* are protected pending the issuance of a *Substantial Performance of the Work* certificate and be responsible for the correction of defects or work not performed regardless of whether or not such was apparent when such certificates were issued.

GC 5.7 FINAL PAYMENT

- 5.7.1 When the *Design-Builder* considers that the *Design Services* and the *Work* are completed, the *Design-Builder* shall submit an application for final payment.
- 5.7.2 The *Payment Certifier* will, no later than 10 calendar days after the receipt of an application from the *Design-Builder* for final payment, verify the validity of the application and advise the *Design-Builder* in writing that the application is valid or give reasons why it is not valid.
- 5.7.3 When the *Payment Certifier* finds the *Design-Builder's* application for final payment valid, the *Payment Certifier* will promptly issue a final certificate for payment.
- 5.7.4 Subject to the provision of paragraph 10.4.1 of GC 10.4 – WORKERS' COMPENSATION, and any lien legislation applicable to the *Place of the Work*, the *Owner* shall, no later than 5 calendar days after the issuance of a final certificate for payment, pay the *Design-Builder* as provided in Article A-5 of the Agreement – PAYMENT.

Note: This contract is protected by copyright. Use of a CCDC 14 document not containing a CCDC 14 copyright seal constitutes an infringement of copyright. Only sign this contract if the document cover page bears a CCDC 14 copyright seal to demonstrate that it is intended by the parties to be an accurate and unamended version of CCDC 14 – 2013 except to the extent that any alterations, additions or modifications are set forth in supplementary conditions.

GC 5.8 DEFERRED WORK

- 5.8.1 If because of climatic or other conditions reasonably beyond the control of the *Design-Builder*, there are items of work that cannot be performed, payment in full for that portion of the *Design Services* or *Work* which has been performed as certified by the *Payment Certifier* shall not be withheld or delayed by the *Owner* on account thereof, but the *Owner* may withhold, until the remaining portions of the *Design Services* and *Work* are finished, only such amount that the *Payment Certifier* determines is sufficient and reasonable to cover the cost of performing such remaining work.

GC 5.9 NON-CONFORMING DESIGN SERVICES AND WORK

- 5.9.1 No payment by the *Owner* under the *Contract* nor partial or entire use or occupancy of the *Work* by the *Owner* shall constitute an acceptance of any portion of the *Design Services* and the *Work* which are not in accordance with the requirements of the *Contract Documents*.

PART 6 CHANGES IN THE CONTRACT

GC 6.1 OWNER'S RIGHT TO MAKE CHANGES

- 6.1.1 The *Owner* without invalidating the *Contract*, may make:
- .1 changes to the *Work* or to the *Owner's Statement of Requirements* consisting of additions, deletions or revisions to the *Design Services* or to the *Work*, by *Change Order* or *Change Directive*, and
 - .2 changes to the *Contract Time* by *Change Order*.
- 6.1.2 The *Design-Builder* shall not perform a change in the *Design Services*, *Construction Documents* or to the *Work* without a *Change Order* or a *Change Directive*.

GC 6.2 CHANGE ORDER

- 6.2.1 When a change is proposed or required, the *Owner* or the *Design-Builder* shall provide a written description of the proposed change to the other party. The *Design-Builder* shall present, in a form acceptable to the *Owner*, a method of adjustment or an amount of adjustment for the *Contract Price*, if any, and the adjustment in the *Contract Time*, if any, for the proposed change.
- 6.2.2 When the *Owner* and *Design-Builder* agree to the adjustments in the *Contract Price* and *Contract Time*, or to the method to be used to determine the adjustments, such agreement shall be effective immediately and shall be recorded in a *Change Order*. The value of the *Design Services* or the *Work* performed as the result of a *Change Order* shall be included in applications for progress payment.
- 6.2.3 If the *Owner* requests the *Design-Builder* to submit a proposal for a change and then elects not to proceed with the change, a *Change Order* shall be issued by the *Owner* to reimburse the *Design-Builder* for all costs incurred by the *Design-Builder* in developing the proposal, including the cost of the related *Design Services*.

GC 6.3 CHANGE DIRECTIVE

- 6.3.1 If the *Owner* requires the *Design-Builder* to proceed with a change prior to the *Owner* and the *Design-Builder* agreeing upon the corresponding adjustment in *Contract Price* and *Contract Time*, the *Owner* shall issue a *Change Directive*.
- 6.3.2 A *Change Directive* shall only be used to direct a change which is within the general scope of the *Contract Documents*.
- 6.3.3 A *Change Directive* shall not be used to direct a change in the *Contract Time* only.
- 6.3.4 Upon receipt of a *Change Directive*, the *Design-Builder* shall proceed promptly with the change.
- 6.3.5 For the purpose of valuing *Change Directives*, changes that are not substitutions or otherwise related to each other shall not be grouped together in the same *Change Directive*.
- 6.3.6 The adjustment in the *Contract Price* for a change carried out by way of a *Change Directive* shall be determined on the basis of the cost of the *Design-Builder's* actual expenditures and savings attributable to the *Change Directive*, valued in accordance with paragraph 6.3.7 and as follows:
- .1 If the change results in a net increase in the *Design-Builder's* cost, the *Contract Price* shall be increased by the amount of the net increase in the *Design-Builder's* cost, plus the *Design-Builder's* percentage fee on the net increase.

Note: This contract is protected by copyright. Use of a CCDC 14 document not containing a CCDC 14 copyright seal constitutes an infringement of copyright. Only sign this contract if the document cover page bears a CCDC 14 copyright seal to demonstrate that it is intended by the parties to be an accurate and unamended version of CCDC 14 – 2013 except to the extent that any alterations, additions or modifications are set forth in supplementary conditions.

- .2 If the change results in a net decrease in the *Design-Builder's* cost, the *Contract Price* shall be decreased by the amount of the net decrease in the *Design-Builder's* cost, without adjustment for the *Design-Builder's* percentage fee.
- 6.3.7 The cost of performing the work attributable to the *Change Directive* shall be limited to the actual cost of the following:
- .1 salaries, wages and benefits paid to personnel in the direct employ of the *Design-Builder* under a salary or wage schedule agreed upon by the *Owner* and the *Design-Builder*, or in the absence of such a schedule, actual salaries, wages and benefits paid under applicable bargaining agreement, and in the absence of a salary or wage schedule and bargaining agreement, actual salaries, wages and benefits paid by the *Design-Builder*, for personnel:
 - (1) stationed at the *Design-Builder's* field office, in whatever capacity employed;
 - (2) engaged in expediting the production or transportation of material or equipment, at shops or on the road;
 - (3) engaged in the preparation or review of *Shop Drawings*, fabrication drawings, coordination drawings, and project record drawings; or
 - (4) engaged in the processing of changes in the *Design Services* or in the *Work*;
 - .2 contributions, assessments, or taxes incurred for such items as employment insurance, provincial or territorial health insurance, workers' compensation, and Canada or Quebec Pension Plan, insofar as such cost is based on wages, salaries, or other remuneration paid to employees of the *Design-Builder* and included in the cost of the work as provided in paragraphs 6.3.7.1;
 - .3 travel and subsistence expenses of the *Design-Builder's* personnel described in paragraphs 6.3.7.1;
 - .4 all *Products* including cost of transportation thereof;
 - .5 materials, supplies, *Construction Equipment*, *Temporary Work*, and hand tools not owned by the workers, including transportation and maintenance thereof, which are consumed in the performance of the *Work*, and cost less salvage value on such items used but not consumed, which remain the property of the *Design-Builder*;
 - .6 all tools and *Construction Equipment*, exclusive of hand tools used in the performance of the *Work* whether rented from or provided by the *Design-Builder* or others, including installation, minor repairs and replacements, dismantling, removal, transportation, and delivery cost thereof;
 - .7 all equipment and services required for the *Design-Builder's* field office;
 - .8 deposits lost;
 - .9 the cost of *Design Services* including all fees and disbursements of the *Consultant* and *Other Consultants* engaged to perform such services;
 - .10 the amounts of all subcontracts;
 - .11 quality assurance such as independent inspection and testing services;
 - .12 charges levied by authorities having jurisdiction at the *Place of the Work*;
 - .13 royalties, patent license fees, and damages for infringement of patents and cost of defending suits therefore subject always to the *Design-Builder's* obligations to indemnify the *Owner* as provided in paragraph 10.3.1 of GC 10.3 – PATENT FEES;
 - .14 any adjustment in premiums for all bonds and insurance which the *Design-Builder* is required, by the *Contract Documents*, to purchase and maintain;
 - .15 any adjustment in taxes, other than *Value Added Taxes*, and duties for which the *Design-Builder* is liable;
 - .16 charges for long distance telephone and facsimile communications, courier services, expressage, and petty cash items incurred in relation to the performance of the *Work*;
 - .17 removal and disposal of waste products and debris; and
 - .18 safety measures and requirements.
- 6.3.8 Notwithstanding other provisions contained in the General Conditions of the *Contract*, it is the intention of the parties that the cost of any item under any cost element referred to in paragraph 6.3.7 shall cover and include any and all costs or liabilities attributable to the *Change Directive* other than those which are the result of or occasioned by any failure on the part of the *Design-Builder* to exercise reasonable care and diligence in the *Design-Builder's* attention to the *Design Services* or to the *Work*. Any cost due to failure on the part of the *Design-Builder* to exercise reasonable care and diligence in the *Design-Builder's* attention to the *Design Services* or to the *Work* shall be borne by the *Design-Builder*.
- 6.3.9 The *Design-Builder* shall keep full and detailed accounts and records necessary for the documentation of the cost of performing the work attributable to the *Change Directive* and shall provide the *Owner* with copies thereof when requested.
- 6.3.10 For the purpose of valuing *Change Directives*, the *Owner* shall be afforded reasonable access to all of the *Design-Builder's* pertinent documents related to the cost of performing the work attributable to the *Change Directive*.

Note: This contract is protected by copyright. Use of a CCDC 14 document not containing a CCDC 14 copyright seal constitutes an infringement of copyright. Only sign this contract if the document cover page bears a CCDC 14 copyright seal to demonstrate that it is intended by the parties to be an accurate and unamended version of CCDC 14 – 2013 except to the extent that any alterations, additions or modifications are set forth in supplementary conditions.

- 6.3.11 Pending determination of the final amount of a *Change Directive*, the undisputed value of the work performed as the result of a *Change Directive* is to be included in progress payments.
- 6.3.12 If the *Owner* and *Design-Builder* do not agree on the proposed adjustment in the *Contract Time* attributable to the change, or the method of determining it, the adjustment shall be referred to the provisions of PART 8 – DISPUTE RESOLUTION, for determination.
- 6.3.13 When the *Owner* and the *Design-Builder* reach agreement on the adjustment to the *Contract Price* and to the *Contract Time*, this agreement shall be recorded in a *Change Order*.

GC 6.4 CONCEALED OR UNKNOWN CONDITIONS

- 6.4.1 If the *Owner* or the *Design-Builder* discovers conditions at the *Place of the Work* which are:
 - .1 subsurface or otherwise concealed physical conditions which existed before the commencement of the *Contract* and which differ materially from those indicated in the *Contract Documents*; or
 - .2 physical conditions, other than conditions due to weather, that are of a nature which differ materially from those ordinarily found to exist and generally recognized as inherent in construction activities of the character provided for in the *Contract Documents*,
 then the observing party shall give *Notice in Writing* to the other party of such conditions before they are disturbed and in no event later than 5 *Working Days* after first observance of the conditions.
- 6.4.2 The *Owner* will promptly investigate such conditions. If the conditions differ materially from the *Contract Documents* and this would cause an increase or decrease in the *Design-Builder's* cost or time to perform the *Design Services* or the *Work*, the *Owner* will issue appropriate instructions for a change in the *Contract* as provided in GC 6.2 – CHANGE ORDER or GC 6.3 – CHANGE DIRECTIVE.
- 6.4.3 If the *Owner* is of the opinion that the conditions at the *Place of the Work* are not materially different or that no change in the *Contract Price* or the *Contract Time* is justified, the *Owner* will advise the *Design-Builder* in writing of the grounds on which this opinion is based.
- 6.4.4 The *Design-Builder* shall not be entitled to an adjustment in the *Contract Price* or the *Contract Time* if such conditions were reasonably apparent during the request for proposal period or bidding period and prior to proposal closing or bid closing.
- 6.4.5 If such concealed or unknown conditions relate to toxic and hazardous substances and materials, artifacts and fossils, or mould, the parties will be governed by the provisions of GC 9.2 – TOXIC AND HAZARDOUS SUBSTANCES AND MATERIALS, GC 9.3 – ARTIFACTS AND FOSSILS and GC 9.5 – MOULD.

GC 6.5 DELAYS

- 6.5.1 If the *Design-Builder* is delayed in the performance of the *Design Services* or the *Work* by an action or omission of the *Owner* or anyone employed or engaged by the *Owner* directly or indirectly, contrary to the provisions of the *Contract Documents*, then the *Contract Time* shall be extended for such reasonable time as agreed between the *Owner* and the *Design-Builder*. The *Design-Builder* shall be reimbursed by the *Owner* for reasonable costs incurred by the *Design-Builder* as the result of such delay.
- 6.5.2 If the *Design-Builder* is delayed in the performance of the *Design Services* or the *Work* by a stop work order issued by a court or other public authority and providing that such order was not issued as the result of an act or fault of the *Design-Builder* or any person employed or engaged by the *Design Builder* directly or indirectly, then the *Contract Time* shall be extended for such reasonable time as agreed between the *Owner* and the *Design-Builder*. The *Design-Builder* shall be reimbursed by the *Owner* for reasonable costs incurred by the *Design-Builder* as the result of such delay.
- 6.5.3 If the *Design-Builder* is delayed in the performance of the *Design Services* or the *Work* by:
 - .1 labour disputes, strikes, lock-outs (including lock-outs decreed or recommended for its members by a recognized contractors' association, of which the *Design-Builder* is a member or to which the *Design-Builder* is otherwise bound), or
 - .2 fire, unusual delay by common carriers or unavoidable casualties, or
 - .3 abnormally adverse weather conditions, or
 - .4 any cause beyond the *Design-Builder's* control other than one resulting from a default or breach of *Contract* by the *Design-Builder*,
 then the *Contract Time* shall be extended for such reasonable time as agreed between the *Owner* and the *Design-Builder*. The extension of time shall not be less than the time lost as the result of the event causing the delay, unless the *Design-Builder* agrees to a shorter extension. The *Design-Builder* shall not be entitled to payment for costs

Note: This contract is protected by copyright. Use of a CCDC 14 document not containing a CCDC 14 copyright seal constitutes an infringement of copyright. Only sign this contract if the document cover page bears a CCDC 14 copyright seal to demonstrate that it is intended by the parties to be an accurate and unamended version of CCDC 14 – 2013 except to the extent that any alterations, additions or modifications are set forth in supplementary conditions.

incurred by such delays unless such delays result from actions of the *Owner*, or anyone employed or engaged by the *Owner* directly or indirectly.

- 6.5.4 No extension shall be made for delay unless *Notice in Writing* of the cause of delay is given to the *Owner* no later than 10 *Working Days* after the commencement of the delay. In the case of a continuing cause of delay only one *Notice in Writing* shall be necessary.
- 6.5.5 Any adjustment to *Contract Price* and *Contract Time* required as a result of GC 6.5 – DELAYS shall be made as provided in GC 6.1 – OWNER’S RIGHT TO MAKE CHANGES, GC 6.2 – CHANGE ORDER, and GC 6.3 – CHANGE DIRECTIVE.

GC 6.6 CLAIMS FOR A CHANGE IN CONTRACT PRICE

- 6.6.1 If the *Design-Builder* intends to make a claim for an increase to the *Contract Price*, or if the *Owner* intends to make a claim for a credit to the *Contract Price*, the party that intends to make the claim shall give timely *Notice in Writing* of intent to claim to the other party, to give the other party the opportunity to take actions to mitigate the claim.
- 6.6.2 Upon commencement of the event or series of events giving rise to a claim, the party intending to make the claim shall:
 - .1 take all reasonable measures to mitigate any loss or expense which may be incurred as a result of such event or series of events, and
 - .2 keep such records as may be necessary to support the claim.
- 6.6.3 The party making the claim shall submit within a reasonable time to the other party a detailed account of the amount claimed and the grounds upon which the claim is based.
- 6.6.4 Where the event or series of events giving rise to the claim has a continuing effect, the detailed account submitted under paragraph 6.6.3 shall be considered to be an interim account and the party making the claim shall, at regular intervals as agreed between the parties, submit further interim accounts giving the accumulated amount of the claim and any further grounds upon which it is based. The party making the claim shall submit a final account after the end of the effects resulting from the event or series of events.
- 6.6.5 If the *Owner* and *Design-Builder* are in disagreement regarding the basis for the claim or its valuation, the matter shall be settled in accordance with Part 8 of the General Conditions – DISPUTE RESOLUTION.

PART 7 RIGHT TO SUSPEND OR TERMINATE

GC 7.1 OWNER'S RIGHT TO SUSPEND THE DESIGN SERVICES OR TERMINATE THE CONTRACT BEFORE THE WORK COMMENCES

- 7.1.1 The *Owner* may, at any time before the *Work* commences at the *Place of the Work*, suspend performance of the *Design Services* by giving *Notice in Writing* to the *Design-Builder* indicating the expected length of the suspension. Such suspension shall be effective in the manner as stated in the *Notice in Writing* and shall be without prejudice to any claims which either party may have against the other.
- 7.1.2 Upon receiving a notice of suspension, the *Design-Builder* shall, subject to any directions in the notice of suspension, suspend performance of the *Design Services*.
- 7.1.3 If the *Design Services* are suspended for a period of 20 *Working Days* or less, the *Design-Builder*, upon the expiration of the period of suspension, shall resume the performance of the *Design Services* in accordance with the *Contract Documents*. The *Contract Price* and *Contract Time* shall be adjusted as provided in paragraph 6.5.1 of GC 6.5 – DELAYS.
- 7.1.4 If, after 20 *Working Days* from the date of delivery of the *Notice in Writing* regarding the suspension of the *Design Services*, the *Owner* and the *Design-Builder* agree to continue with and complete the *Design Services* and the *Work*, the *Design-Builder* shall resume the *Design Services* in accordance with any terms and conditions agreed upon by the *Owner* and the *Design-Builder*. Failing such an agreement, the *Owner* shall be deemed to have terminated the *Contract* and the *Design-Builder* shall be entitled to be paid for all *Design Services* performed and for such other damages as the *Design-Builder* may have sustained, including reasonable profit, as a result of the termination of the *Contract*.

Note: This contract is protected by copyright. Use of a CCDC 14 document not containing a CCDC 14 copyright seal constitutes an infringement of copyright. Only sign this contract if the document cover page bears a CCDC 14 copyright seal to demonstrate that it is intended by the parties to be an accurate and unamended version of CCDC 14 – 2013 except to the extent that any alterations, additions or modifications are set forth in supplementary conditions.

GC 7.2 OWNER'S RIGHT TO TERMINATE THE DESIGN-BUILDER'S RIGHT TO CONTINUE WITH THE DESIGN SERVICES OR WORK, OR TERMINATE THE CONTRACT

- 7.2.1 If the *Design-Builder* is adjudged bankrupt, or makes a general assignment for the benefit of creditors because of the *Design-Builder's* insolvency, or if a receiver is appointed because of the *Design-Builder's* insolvency, the *Owner* may, without prejudice to any other right or remedy the *Owner* may have, terminate the *Design-Builder's* right to continue with the *Design Services* or *Work*, by giving the *Design-Builder* or receiver or trustee in bankruptcy *Notice in Writing* to that effect.
- 7.2.2 If the *Design-Builder* neglects to properly perform the *Design Services* or *Work*, or otherwise fails to comply with the requirements of the *Contract* to a substantial degree, the *Owner* may, without prejudice to any other right or remedy the *Owner* may have, give the *Design-Builder* *Notice in Writing* that the *Design-Builder* is in default of the *Design-Builder's* contractual obligations and instruct the *Design-Builder* to correct the default in the 5 *Working Days* immediately following the receipt of such *Notice in Writing*.
- 7.2.3 If the default cannot be corrected in the 5 *Working Days* specified or in such other time period as may be subsequently agreed in writing by the parties, the *Design-Builder* shall be in compliance with the *Owner's* instructions if the *Design-Builder*:
- .1 commences the correction of the default within the specified or agreed time, as the case may be, and
 - .2 provides the *Owner* with an acceptable schedule for such correction, and
 - .3 corrects the default in accordance with the *Contract* terms and with such schedule.
- 7.2.4 If the *Design-Builder* fails to correct the default in the time specified or in such other time period as may be subsequently agreed in writing by the parties, without prejudice to any other right or remedy the *Owner* may have, the *Owner* may:
- .1 correct such default and deduct the cost thereof from any payment then or thereafter due the *Design-Builder* provided the *Payment Certifier* has certified such cost to the *Owner* and the *Design-Builder*, or
 - .2 terminate the *Design-Builder's* right to continue with the *Design Services* or *Work* in whole or in part, or
 - .3 terminate the *Contract*.
- 7.2.5 If the *Owner* terminates the *Design-Builder's* right to continue with the *Design Services* or *Work* as provided in paragraphs 7.2.1 and 7.2.4, or if the *Owner* terminates the *Contract*, the *Owner* shall be entitled to:
- .1 use the plans, sketches, *Drawings*, graphic representations and *Specifications* pursuant to paragraph 1.1.8 of GC 1.1 – CONTRACT DOCUMENTS, as reasonably required for the completion of design and construction of the *Project*, but unless otherwise agreed, the *Consultant* and *Other Consultants* shall not assume any responsibility or liability resulting from use of such documents which may be incomplete;
 - .2 take possession of the *Work* and *Products* at the *Place of the Work*, and subject to the rights of third parties, utilize the *Construction Equipment* at the *Place of the Work*, and finish the *Design Services* and *Work* by whatever method the *Owner* may consider expedient, but without undue delay or expense;
 - .3 withhold further payment to the *Design-Builder* until final payment is determined in accordance with paragraphs 7.2.5.4 and 7.2.5.5;
 - .4 charge the *Design-Builder* the amount by which:
 - (1) the full cost of finishing the *Design Services* and the *Work*, as certified by the *Payment Certifier*, including compensation to the *Payment Certifier* for the *Payment Certifier's* additional services, plus
 - (2) a reasonable allowance as determined by the *Payment Certifier* to cover the cost of corrections to work performed by the *Design-Builder* that may be required under GC 12.5 – WARRANTY, together exceeds the unpaid balance of the *Contract Price*; however, if such cost of finishing the *Design Services* and the *Work* is less than the unpaid balance of the *Contract Price*, the *Owner* shall pay the *Design-Builder* the difference; and
 - .5 on expiry of the warranty period, charge the *Design-Builder* the amount by which the cost of corrections to the *Design-Builder's* work under GC 12.5 – WARRANTY exceeds the allowance provided for such corrections, or if the cost of such corrections is less than the allowance, pay the *Design-Builder* the difference.
- 7.2.6 The *Design-Builder's* obligation under the *Contract* as to quality, correction and warranty of the *Work* performed by the *Design-Builder* up to the time of termination shall continue after such termination of the *Contract*.

Note: This contract is protected by copyright. Use of a CCDC 14 document not containing a CCDC 14 copyright seal constitutes an infringement of copyright. Only sign this contract if the document cover page bears a CCDC 14 copyright seal to demonstrate that it is intended by the parties to be an accurate and unamended version of CCDC 14 – 2013 except to the extent that any alterations, additions or modifications are set forth in supplementary conditions.

GC 7.3 DESIGN-BUILDER'S RIGHT TO SUSPEND THE DESIGN SERVICES OR WORK, OR TERMINATE THE CONTRACT

- 7.3.1 If the *Owner* is adjudged bankrupt, or makes a general assignment for the benefit of creditors because of the *Owner's* insolvency, or if a receiver is appointed because of the *Owner's* insolvency, the *Design-Builder* may, without prejudice to any other right or remedy the *Design-Builder* may have, terminate the *Contract* by giving the *Owner* or receiver or trustee in bankruptcy *Notice in Writing* to that effect.
- 7.3.2 If the *Design Services* or *Work* are suspended or otherwise delayed for a period of more than 20 *Working Days* under an order of a court or other public authority and providing that such order was not issued as the result of an act or fault of the *Design-Builder* or of anyone directly or indirectly employed or engaged by the *Design-Builder*, the *Design-Builder* may, without prejudice to any other right or remedy the *Design-Builder* may have, terminate the *Contract* by giving the *Owner* *Notice in Writing* to that effect.
- 7.3.3 The *Design-Builder* may give *Notice in Writing* to the *Owner* that the *Owner* is in default of the *Owner's* contractual obligations if:
- .1 the *Owner* fails to furnish, when so requested by the *Design-Builder*, reasonable evidence that financial arrangements have been made to fulfill the *Owner's* obligations under the *Contract*, or
 - .2 the *Payment Certifier* fails to issue a certificate as provided in GC 5.3 – PROGRESS PAYMENT, or
 - .3 the *Owner* fails to pay the *Design-Builder* when due the amounts certified by the *Payment Certifier* or awarded by arbitration or court, or
 - .4 the *Owner* violates the requirements of the *Contract* to a substantial degree.
- 7.3.4 The *Design-Builder's* *Notice in Writing* to the *Owner* provided under paragraph 7.3.3 shall advise that if the default is not corrected within 5 *Working Days* following the receipt of the *Notice in Writing*, the *Design-Builder* may, without prejudice to any other right or remedy the *Design-Builder* may have, suspend the *Design Services* or the *Work*, or terminate the *Contract*.
- 7.3.5 If the *Design-Builder* suspends the *Work* pursuant to paragraph 7.3.4, the *Design-Builder* shall:
- .1 at the cost of the *Owner* maintain operations necessary for safety reasons and for care and preservation of the *Work*,
 - .2 make reasonable efforts to delay *Product* deliveries, and
 - .3 not remove from the *Place of the Work* any part of the *Work* or any *Products* not yet incorporated into the *Work*.
- 7.3.6 If the *Design-Builder* terminates the *Contract* under the conditions set out above, the *Design-Builder* shall be entitled to be paid for all *Design Services* and *Work* performed including reasonable profit, for loss sustained upon *Products* and *Construction Equipment*, and for such other damages as the *Design-Builder* may have sustained as a result of the termination of the *Contract*.

PART 8 DISPUTE RESOLUTION

GC 8.1 NEGOTIATION, MEDIATION AND ARBITRATION

- 8.1.1 Differences between the parties to the *Contract* as to the interpretation, application or administration of the *Contract* or any failure to agree where agreement between the parties is called for, herein collectively called disputes, shall be settled in accordance with the requirements of Part 8 of the General Conditions – DISPUTE RESOLUTION.
- 8.1.2 If a dispute does arise, the parties shall make all reasonable efforts to resolve their dispute by amicable negotiations and agree to provide, without prejudice, frank, candid and timely disclosure of relevant facts, information and documents to facilitate these negotiations.
- 8.1.3 If the parties do not reach an agreement, either party shall send a *Notice in Writing* of dispute to the other party which contains the particulars of the matter in dispute, the relevant provisions of the *Contract Documents* and, if a Project Mediator has not already been appointed, a request that a Project Mediator be appointed. The responding party shall send a *Notice in Writing* of reply to the dispute within 10 *Working Days* after receipt of such *Notice in Writing*, setting out particulars of the response and any relevant provisions of the *Contract Documents*.
- 8.1.4 If a dispute is not resolved promptly, the *Owner* will issue such instructions as necessary to prevent delays pending settlement of the dispute. The parties shall act immediately according to such instructions, it being understood that by so doing neither party will jeopardize any claim the party may have. If it is subsequently determined that such instructions were in error or at variance with the *Contract Documents*, the *Owner* shall pay the *Design-Builder* costs incurred by the *Design-Builder* in carrying out such instructions which the *Design-Builder* was required to do beyond what the *Contract Documents* correctly understood and interpreted would have required, including costs resulting from interruption of the *Design Services* or the *Work*.

Note: This contract is protected by copyright. Use of a CCDC 14 document not containing a CCDC 14 copyright seal constitutes an infringement of copyright. Only sign this contract if the document cover page bears a CCDC 14 copyright seal to demonstrate that it is intended by the parties to be an accurate and unamended version of CCDC 14 – 2013 except to the extent that any alterations, additions or modifications are set forth in supplementary conditions.

- 8.1.5 The parties shall, in accordance with the Rules for Mediation of Construction Disputes as provided in CCDC 40 in effect at the time of proposal closing or bid closing, appoint a Project Mediator:
- .1 within 20 *Working Days* after the *Contract* was awarded, or
 - .2 if the parties neglected to make an appointment within the 20 *Working Days*, within 10 *Working Days* after either party by *Notice in Writing* requests that the Project Mediator be appointed.
- 8.1.6 After a period of 10 *Working Days* following receipt of a responding party's *Notice in Writing* of reply under paragraph 8.1.3, the parties shall request the Project Mediator to assist the parties to reach agreement on any unresolved dispute. The mediated negotiations shall be conducted in accordance with the Rules for Mediation and Arbitration of Construction Disputes as provided in CCDC 40 Rules for Mediation and Arbitration of Construction Disputes in effect at the time of proposal closing or bid closing.
- 8.1.7 If the dispute has not been resolved within 10 *Working Days* after the Project Mediator was requested under paragraph 8.1.6 or within such further period agreed by the parties, the Project Mediator shall terminate the mediated negotiations by giving *Notice in Writing* to the *Owner* and the *Design-Builder*.
- 8.1.8 By giving a *Notice in Writing* to the other party not later than 10 *Working Days* after the date of termination of the mediated negotiations under paragraph 8.1.7, either party may refer the dispute to be finally resolved by arbitration conducted in accordance with the Rules for Mediation and Arbitration of Construction Disputes as provided in CCDC 40 in effect at the time of proposal closing or bid closing. The arbitration shall be conducted in the jurisdiction of the *Place of the Work*.
- 8.1.9 On expiration of the 10 *Working Days* stipulated in paragraph 8.1.8, the arbitration agreement under paragraph 8.1.8 is not binding on the parties and, if a *Notice in Writing* is not given under paragraph 8.1.8 within the required time, the parties may refer the unresolved dispute to the courts or to any other form of dispute resolution, including arbitration, which they have agreed to use.
- 8.1.10 If neither party, by *Notice in Writing*, given within 10 *Working Days* of the date of *Notice in Writing* requesting arbitration in paragraph 8.1.8, requires that a dispute be arbitrated immediately, all disputes referred to arbitration as provided in paragraph 8.1.8 shall be
- .1 held in abeyance until
 - (1) *Substantial Performance of the Work*,
 - (2) the *Contract* has been terminated, or
 - (3) the *Design-Builder* has abandoned the *Design Services* or the *Work*, whichever is earlier; and
 - .2 consolidated into a single arbitration under the rules governing the arbitration under paragraph 8.1.8.

GC 8.2 RETENTION OF RIGHTS

- 8.2.1 It is agreed that no act by either party shall be construed as a renunciation or waiver of any rights or recourses, provided the party has given the *Notice in Writing* required under Part 8 of the General Conditions – DISPUTE RESOLUTION and has carried out the instructions as provided in paragraph 8.1.4.
- 8.2.2 Nothing in Part 8 of the General Conditions – DISPUTE RESOLUTION shall be construed in any way to limit a party from asserting any statutory right to a lien under applicable lien legislation of the jurisdiction of the *Place of the Work* and the assertion of such right by initiating judicial proceedings is not to be construed as a waiver of any right that party may have under paragraph 8.1.9 of GC 8.1 – NEGOTIATION, MEDIATION AND ARBITRATION to proceed by way of arbitration to adjudicate the merits of the claim upon which such a lien is based.
- 8.2.3 Part 8 of the General Conditions – DISPUTE RESOLUTION shall survive suspension or termination of the *Contract*.

PART 9 PROTECTION OF PERSONS AND PROPERTY

GC 9.1 PROTECTION OF WORK AND PROPERTY

- 9.1.1 The *Design-Builder* shall protect the *Work* and the *Owner's* property and property adjacent to the *Place of the Work* from damage which may arise as the result of the *Design-Builder's* operations under the *Contract*, and shall be responsible for such damage, except damage which occurs as the result of:
- .1 errors in the *Owner's Statement of Requirements*, or
 - .2 acts or omissions by the *Owner*, the *Owner's* agents and employees.
- 9.1.2 Before commencing any work, the *Design-Builder* shall determine the location of all underground utilities and structures that are reasonably apparent in an inspection of the *Place of the Work*.

Note: This contract is protected by copyright. Use of a CCDC 14 document not containing a CCDC 14 copyright seal constitutes an infringement of copyright. Only sign this contract if the document cover page bears a CCDC 14 copyright seal to demonstrate that it is intended by the parties to be an accurate and unamended version of CCDC 14 – 2013 except to the extent that any alterations, additions or modifications are set forth in supplementary conditions.

- 9.1.3 Should the *Design-Builder* in the performance of the *Contract* damage the *Work*, the *Owner's* property, or property adjacent to the *Place of the Work*, the *Design-Builder* shall be responsible for making good such damage at the *Design-Builder's* expense.
- 9.1.4 Should damage occur to the *Work* or *Owner's* property for which the *Design-Builder* is not responsible, as provided in paragraph 9.1.1, the *Design-Builder* shall make good such damage to the *Work* and, if the *Owner* so directs, to the *Owner's* property. The *Contract Price* and *Contract Time* shall be adjusted as provided in GC 6.1 – OWNER'S RIGHT TO MAKE CHANGES, GC 6.2 – CHANGE ORDER and GC 6.3 – CHANGE DIRECTIVE.

GC 9.2 TOXIC AND HAZARDOUS SUBSTANCES AND MATERIALS

- 9.2.1 For the purposes of applicable legislation related to toxic and hazardous substances, the *Owner* shall be deemed to have control and management of the *Place of the Work* with respect to existing conditions.
- 9.2.2 Prior to the *Design-Builder* commencing the *Design Services* or *Work*, the *Owner* shall, subject to legislation applicable to the *Place of the Work*:
- .1 take all reasonable steps to determine whether any toxic or hazardous substances are present at the *Place of the Work*, and
 - .2 provide the *Design-Builder* with a written list of any such substances that are known to exist and their locations.
- 9.2.3 The *Owner* shall take all reasonable steps to ensure that no person's exposure to any toxic or hazardous substance exceeds the time weighted levels prescribed by applicable legislation at the *Place of the Work* and that no property is damaged or destroyed as a result of exposure to, or the presence of, toxic or hazardous substances which were at the *Place of the Work* prior to the *Design-Builder* commencing the *Work*.
- 9.2.4 Unless the *Contract* expressly provides otherwise, the *Owner* shall be responsible for taking all necessary steps, in accordance with applicable legislation in force at the *Place of the Work*, to dispose of, store or otherwise render harmless toxic or hazardous substances which were present at the *Place of the Work* prior to the *Design-Builder* commencing the *Work*.
- 9.2.5 If the *Design-Builder* encounters toxic or hazardous substances at the *Place of the Work* or has reasonable grounds to believe that toxic or hazardous substances are present at the *Place of the Work*, which were not brought to the *Place of the Work* by the *Design-Builder* or anyone for whom the *Design-Builder* is responsible and which were not disclosed by the *Owner* or which were disclosed but have not been dealt with as required under paragraph 9.2.4, the *Design-Builder* shall:
- .1 take all reasonable steps, including stopping the *Work*, to ensure that no person's exposure to any toxic or hazardous substances exceeds any applicable time weighted levels prescribed by legislation applicable to the *Place of the Work*, and
 - .2 immediately report the circumstances to the *Owner* in writing.
- 9.2.6 If the *Owner* and *Design-Builder* do not agree on the existence or significance of the toxic or hazardous substances, or whether the toxic or hazardous substances were brought onto the *Place of the Work* by the *Design-Builder* or anyone for whom the *Design-Builder* is responsible, the *Owner* shall retain and pay for an independent qualified expert to investigate and make a determination on such matters. The expert's report shall be delivered to the *Owner* and the *Design-Builder*.
- 9.2.7 If the *Owner* and *Design-Builder* agree or if the expert referred to in paragraph 9.2.6 determines that the toxic or hazardous substances were not brought onto the *Place of the Work* by the *Design Builder* or anyone for whom the *Design Builder* is responsible, the *Owner* shall promptly at the *Owner's* own expense:
- .1 take all steps as required under paragraph 9.2.4;
 - .2 reimburse the *Design-Builder* for the costs of all steps taken pursuant to paragraph 9.2.5;
 - .3 extend the *Contract Time* for such reasonable time as agreed between the *Design-Builder* and the *Owner* in consultation with the expert referred to in 9.2.6 and reimburse the *Design-Builder* for reasonable costs incurred as a result of the delay; and
 - .4 indemnify the *Design-Builder* as required by GC 12.2 – INDEMNIFICATION.
- 9.2.8 If the *Owner* and *Design-Builder* agree or if the expert referred to in paragraph 9.2.6 determines that the toxic or hazardous substance was brought onto the *Place of the Work* by the *Design-Builder* or anyone for whom the *Design-Builder* is responsible, the *Design-Builder* shall promptly at the *Design-Builder's* own expense:
- .1 take all necessary steps, in accordance with applicable legislation in force at the *Place of the Work*, to safely remove and dispose the toxic or hazardous substances;
 - .2 make good any damage to the *Work*, the *Owner's* property or property adjacent to the *Place of the Work* as provided in paragraph 9.1.3 of GC 9.1 – PROTECTION OF WORK AND PROPERTY;

Note: This contract is protected by copyright. Use of a CCDC 14 document not containing a CCDC 14 copyright seal constitutes an infringement of copyright. Only sign this contract if the document cover page bears a CCDC 14 copyright seal to demonstrate that it is intended by the parties to be an accurate and unamended version of CCDC 14 – 2013 except to the extent that any alterations, additions or modifications are set forth in supplementary conditions.

- .3 reimburse the *Owner* for reasonable costs incurred under paragraph 9.2.6; and
- .4 indemnify the *Owner* as required by GC 12.2 – INDEMNIFICATION.

9.2.9 If either party does not accept the expert’s findings under paragraph 9.2.6, the disagreement shall be settled in accordance with Part 8 of the General Conditions – DISPUTE RESOLUTION. If such disagreement is not resolved promptly, the parties shall act immediately in accordance with the expert’s determination and take the steps required by paragraph 9.2.7 or 9.2.8 it being understood that by so doing, neither party will jeopardize any claim that party may have to be reimbursed as provided in paragraphs 9.2.7 or 9.2.8.

GC 9.3 ARTIFACTS AND FOSSILS

9.3.1 Fossils, coins, articles of value or antiquity, structures and other remains or things of scientific or historic interest discovered at the *Place of the Work* shall, as between the *Owner* and the *Design-Builder*, be deemed to be the absolute property of the *Owner*.

9.3.2 The *Design-Builder* shall take all reasonable precautions to prevent removal or damage to discoveries as identified in paragraph 9.3.1, and shall advise the *Owner* upon discovery of such items.

9.3.3 The *Owner* will investigate the impact on the *Design Services* or the *Work* of the discoveries identified in paragraph 9.3.1. If conditions are found that would cause an increase or decrease in the *Design-Builder’s* cost or time to perform the *Design Services* or the *Work*, the *Owner* will issue appropriate instructions for a change in the *Contract* as provided in GC 6.2 – CHANGE ORDER or GC 6.3 – CHANGE DIRECTIVE.

GC 9.4 CONSTRUCTION SAFETY

9.4.1 Except as provided for in paragraph 2.6.2.2 of GC 2.6 – WORK BY OWNER OR OTHER CONTRACTORS, the *Design-Builder* shall assume overall responsibility for:

- .1 construction health and safety at the *Place of the Work* in compliance with the rules, regulations and practices required by the applicable construction health and safety legislation, and
- .2 establishing, initiating, maintaining, and supervising all health and safety precautions and programs in connection with the performance of the *Work*.

GC 9.5 MOULD

9.5.1 If the *Design-Builder* or *Owner* observes or reasonably suspects the presence of mould at the *Place of the Work*, the remediation of which is not expressly part of the *Work*,

- .1 the observing party shall promptly report the circumstances to the other party in writing, and
- .2 the *Design-Builder* shall promptly take all reasonable steps, including stopping the *Work* if necessary, to ensure that no person suffers injury, sickness or death and that no property is damaged as a result of exposure to or the presence of the mould.

9.5.2 If the *Owner* and *Design-Builder* do not agree on the existence, significance or cause of the mould or as to what steps need be taken to deal with it, the *Owner* shall retain and pay for an independent qualified expert to investigate and make a determination on such matters. The expert’s report shall be delivered to the *Owner* and *Design-Builder*.

9.5.3 If the *Owner* and *Design-Builder* agree, or if the expert referred to in paragraph 9.5.2 determines that the presence of mould was caused by the *Design-Builder’s* operations under the *Contract*, the *Design-Builder* shall promptly, at the *Design-Builder’s* own expense:

- .1 take all reasonable and necessary steps to safely remediate or dispose of the mould, and
- .2 make good any damage to the *Work*, the *Owner’s* property or property adjacent to the *Place of the Work* as provided in paragraph 9.1.3 of GC 9.1 – PROTECTION OF WORK AND PROPERTY, and
- .3 reimburse the *Owner* for reasonable costs incurred under paragraph 9.5.2, and
- .4 indemnify the *Owner* as required by GC 12.2 – INDEMNIFICATION.

9.5.4 If the *Owner* and *Design-Builder* agree, or if the expert referred to in paragraph 9.5.2 determines that the presence of mould was not caused by the *Design-Builder’s* operations under the *Contract*, the *Owner* shall promptly, at the *Owner’s* own expense:

- .1 take all reasonable and necessary steps to safely remediate or dispose of the mould, and
- .2 reimburse the *Design-Builder* for the cost of taking the steps under paragraph 9.5.1.2 and making good any damage to the *Work* as provided in paragraph 9.1.4 of GC 9.1 – PROTECTION OF WORK AND PROPERTY, and
- .3 extend the *Contract Time* for such reasonable time as agreed between the *Design-Builder* and the *Owner* in consultation with the expert referred to in paragraph 9.5.2 and reimburse the *Design-Builder* for reasonable costs incurred as a result of the delay, and

Note: This contract is protected by copyright. Use of a CCDC 14 document not containing a CCDC 14 copyright seal constitutes an infringement of copyright. Only sign this contract if the document cover page bears a CCDC 14 copyright seal to demonstrate that it is intended by the parties to be an accurate and unamended version of CCDC 14 – 2013 except to the extent that any alterations, additions or modifications are set forth in supplementary conditions.

.4 indemnify the *Design-Builder* as required by GC 12.2 – INDEMNIFICATION.

9.5.5 If either party does not accept the expert's finding under paragraph 9.5.2, the disagreement shall be settled in accordance with Part 8 of the General Conditions – DISPUTE RESOLUTION. If such disagreement is not resolved promptly, the parties shall act immediately in accordance with the expert's determination and take the steps required by paragraphs 9.5.3 or 9.5.4, it being understood that by so doing neither party will jeopardize any claim the party may have to be reimbursed as provided in paragraphs 9.5.3 or 9.5.4.

PART 10 GOVERNING REGULATIONS

GC 10.1 TAXES AND DUTIES

10.1.1 The *Contract Price* shall include all taxes and customs duties in effect at the time of the proposal closing or bid closing except for *Value Added Taxes* payable by the *Owner* to the *Design-Builder* as stipulated in Article A-4 of the Agreement – CONTRACT PRICE.

10.1.2 Any increase or decrease in costs to the *Design-Builder* due to changes in such included taxes and duties after the time of the proposal closing or bid closing shall increase or decrease the *Contract Price* accordingly, and either party may submit a claim in accordance with the requirements of GC 6.6 – CLAIMS FOR A CHANGE IN CONTRACT PRICE.

GC 10.2 LAWS, NOTICES, PERMITS, AND FEES

10.2.1 The laws of the *Place of the Work* shall govern the *Design Services* and the *Work*.

10.2.2 The *Owner* shall obtain and pay for the permanent easements and rights of servitude.

10.2.3 Unless otherwise stated, the *Design-Builder* shall obtain and pay for the building permit and other permits, licences, or certificates necessary for the performance of the *Work* at the time of the proposal closing or bid closing. The *Contract Price* includes the cost of these permits, licences, inspections, and certificates, and their procurement.

10.2.4 The *Design-Builder* shall give the required notices and comply with the laws, ordinances, rules, regulations, or codes which are or become in force during the *Design Services* or the performance of the *Work* and which relate to the *Design Services* or the *Work*, to the preservation of the public health, and to construction safety.

10.2.5 The *Design-Builder* shall not be responsible for verifying that the *Owner's Statement of Requirements* is in substantial compliance with the applicable laws, ordinances, rules, regulations, or codes relating to the *Design Services* or the *Work*. If after the time of the proposal closing or bid closing, changes are made to the applicable laws, ordinances, rules, regulations, or codes which require modification to the *Contract Documents*, the *Design-Builder* shall advise the *Owner* in writing requesting direction immediately upon such variance or change becoming known. Changes shall be made as provided in GC 6.1 – OWNER'S RIGHT TO MAKE CHANGES, GC 6.2 – CHANGE ORDER and GC 6.3 – CHANGE DIRECTIVE.

10.2.6 If the *Design-Builder* fails to advise the *Owner* in writing and fails to obtain direction as required in paragraph 10.2.5, and performs work knowing it to be contrary to any laws, ordinances, rules, regulations, or codes, the *Design-Builder* shall be responsible for and shall correct the violations thereof, and shall bear the costs, expenses and damages attributable to the failure to comply with the provisions of such laws, ordinances, rules, regulations, or codes.

10.2.7 If, subsequent to the time of proposal closing or bid closing, changes are made to applicable laws, ordinances, rules, regulations, or codes of authorities having jurisdiction which affect the cost of the *Design Services* or the *Work*, either party may submit a claim in accordance with the requirements of GC 6.6 – CLAIMS FOR A CHANGE IN CONTRACT PRICE.

GC 10.3 PATENT FEES

10.3.1 The *Design-Builder* shall pay the royalties and patent licence fees required for the performance of the *Contract*. The *Design-Builder* shall hold the *Owner* harmless from and against claims, demands, losses, costs, damages, actions, suits, or proceedings arising out of the *Design-Builder's* performance of the *Contract* which are attributable to an infringement or an alleged infringement of a patent of invention by the *Design-Builder* or anyone for whose acts the *Design-Builder* may be liable.

10.3.2 The *Owner* shall hold the *Design-Builder* harmless against claims, demands, losses, costs, damages, actions, suits, or proceedings arising out of the *Design-Builder's* performance of the *Contract* which are attributable to an infringement or an alleged infringement of a patent of invention in executing anything for the purpose of the *Contract*, the model, plan or design of which was supplied by the *Owner* to the *Design-Builder* as part of the *Contract Documents*.

Note: This contract is protected by copyright. Use of a CCDC 14 document not containing a CCDC 14 copyright seal constitutes an infringement of copyright. Only sign this contract if the document cover page bears a CCDC 14 copyright seal to demonstrate that it is intended by the parties to be an accurate and unamended version of CCDC 14 – 2013 except to the extent that any alterations, additions or modifications are set forth in supplementary conditions.

GC 10.4 WORKERS' COMPENSATION

- 10.4.1 Prior to commencing the *Design Services* or the *Work*, again with the *Design-Builder's* application for payment of the holdback amount following *Substantial Performance of the Work* and again with the *Design-Builder's* application for final payment, the *Design-Builder* shall provide evidence of compliance with workers' compensation legislation at the *Place of the Work*, including payments due thereunder.
- 10.4.2 At any time during the term of the *Contract*, when requested by the *Owner*, the *Design-Builder* shall provide such evidence of compliance by the *Design-Builder* and *Subcontractors*.

PART 11 INSURANCE AND CONTRACT SECURITY

GC 11.1 INSURANCE

- 11.1.1 Without restricting the generality of GC 12.2 – INDEMNIFICATION, the *Design-Builder* shall provide, maintain and pay for the following insurance coverages, the minimum requirements of which are specified in CCDC 41 – CCDC INSURANCE REQUIREMENTS in effect at the time of proposal closing or bid closing except as hereinafter provided:
- .1 Everywhere used in CCDC 41 – CCDC INSURANCE REQUIREMENTS, the term “*Contractor*” shall be replaced with the term “*Design-Builder*”.
 - .2 General liability insurance in the name of the *Design-Builder* and include, or in the case of a single, blanket policy, be endorsed to name, the *Owner*, the *Consultant*, *Other Consultants*, the *Owner's Advisor*, and the *Payment Certifier* as insured but only with respect to liability arising out of the operations of the *Design-Builder* with regard to the *Design Services* or *Work*. All liability coverage shall be provided for completed operations hazards from the date of *Substantial Performance of the Work*, as set out in the certificate of *Substantial Performance of the Work*, on an ongoing basis for a period of 6 years.
 - .3 Automobile Liability Insurance from the date of commencement of the *Design Services* or the *Work* until one year after the date of *Substantial Performance of the Work*.
 - .4 If owned or non-owned aircraft and watercraft are used directly or indirectly in the performance of the *Design Services* or *Work*, Aircraft and Watercraft Liability Insurance from the date of commencement of the *Design Services* or *Work* until one year after the date of *Substantial Performance of the Work*.
 - .5 "All risks" property insurance in the joint names of the *Design-Builder*, the *Owner*, the *Consultant*, the *Owner's Advisor*, and the *Payment Certifier*. The policy shall include as Additional Insureds all *Subcontractors*. Where the full insurable value of the *Work* is substantially less than the *Contract Price*, the *Owner* may reduce the amount of insurance required or waive the insurance requirement. The “all risks” property insurance shall be provided from the date of commencement of the *Work* until the earliest of:
 - (1) 10 calendar days after the date of *Substantial Performance of the Work*;
 - (2) on the commencement of use or occupancy of any part or section of *Work* unless such use or occupancy is for construction purposes, habitational, office, banking, convenience store under 465 square metres in area, or parking purposes, or for the installation, testing and commissioning of equipment forming part of the *Work*; or
 - (3) when left unattended for more than 30 consecutive calendar days or when construction activity has ceased for more than 30 consecutive calendar days.
 - .6 Boiler and machinery insurance in the joint names of the *Design-Builder* and the *Owner*. The coverage shall be maintained continuously from commencement of use or operation of the boiler and machinery objects insured by the policy and until 10 calendar days after the date of *Substantial Performance of the Work*.
 - .7 The “all risks” property and boiler and machinery policies shall provide that, in the case of a loss or damage, payment shall be made to the *Owner* and the *Design-Builder* as their respective interests may appear. In the event of loss or damage:
 - (1) the *Design-Builder* shall act on behalf of the *Owner* for the purpose of adjusting the amount of such loss or damage payment with the insurers. When the extent of the loss or damage is determined, the *Design-Builder* shall proceed to restore the *Work*. Loss or damage shall not affect the rights and obligations of either party under the *Contract* except that the *Design-Builder* shall be entitled to such reasonable extension of *Contract Time* as agreed by the *Owner* and *Design-Builder*;
 - (2) the *Design-Builder* shall be entitled to receive from the *Owner*, in addition to the amount due under the *Contract*, the amount at which the *Owner's* interest in restoration of the *Work* has been appraised, such amount to be paid as the restoration of the *Work* proceeds in accordance with the progress payment provisions of the *Contract*. In addition the *Design-Builder* shall be entitled to receive from the payments made by the insurer the amount of the *Design-Builder's* interest in the restoration of the *Work*; and

Note: This contract is protected by copyright. Use of a CCDC 14 document not containing a CCDC 14 copyright seal constitutes an infringement of copyright. Only sign this contract if the document cover page bears a CCDC 14 copyright seal to demonstrate that it is intended by the parties to be an accurate and unamended version of CCDC 14 – 2013 except to the extent that any alterations, additions or modifications are set forth in supplementary conditions.

- (3) to the *Work* arising from the work of the *Owner*, the *Owner's* own forces, or another contractor, in accordance with the *Owner's* obligations under the provisions relating to construction by *Owner* or other contractors, the *Owner* shall pay the *Design-Builder* the cost of restoring the *Work* as the restoration of the *Work* proceeds and as in accordance with the progress payment provisions of the *Contract*.
- .8 *Design-Builder's* Equipment Insurance from the date of commencement of the *Work* until one year after the date of *Substantial Performance of the Work*.
- .9 In addition to the insurance requirements specified in CCDC 41 – CCDC INSURANCE REQUIREMENTS, the *Design-Builder* shall carry professional liability insurance with limits of not less than \$1,000,000 per claim and with an aggregate limit of not less than \$2,000,000 within any policy year, unless specified otherwise in the *Contract Documents*. The policy shall be maintained continuously from the commencement of the *Contract* until 2 years after *Substantial Performance of the Work*.
- 11.1.2 Prior to commencement of the *Design Services* or *Work* and upon the placement, renewal, amendment, or extension of all or any part of the insurance, the *Design-Builder* shall promptly provide the *Owner* with confirmation of coverage and, if required, a true copy of the policies certified by an authorized representative of the insurer together with copies of any amending endorsements applicable to the *Design Services* or *Work*.
- 11.1.3 The *Design-Builder* shall be responsible for deductible amounts under the policies except where such amounts may be excluded from the *Design-Builder's* responsibility by the terms of GC 9.1 – PROTECTION OF WORK AND PROPERTY and GC 12.2 – INDEMNIFICATION.
- 11.1.4 If the *Design-Builder* fails to provide or maintain insurance as required by the *Contract Documents*, then the *Owner* shall have the right to provide and maintain such insurance and give evidence of same to the *Design-Builder* and the *Consultant*. The *Design-Builder* shall pay the cost thereof to the *Owner* on demand or the *Owner* may deduct the cost from any amount which is due or may become due to the *Design-Builder*.
- 11.1.5 All required insurance policies shall be with insurers licensed to underwrite insurance in the jurisdiction of the *Place of the Work*.
- 11.1.6 If a revised version of CCDC 41 – CCDC INSURANCE REQUIREMENTS is published, which specifies reduced insurance requirements, the parties shall address such reduction, prior to the *Design-Builder's* insurance policy becoming due for renewal, and record any agreement in a *Change Order*.
- 11.1.7 If a revised version of CCDC 41 – CCDC INSURANCE REQUIREMENTS is published, which specifies increased insurance requirements, the *Owner* may require the increased coverage from the *Design-Builder* by way of a *Change Order*.
- 11.1.8 A *Change Directive* shall not be used to direct a change in the insurance requirements in response to any revision of CCDC 41 – CCDC INSURANCE REQUIREMENTS.

GC 11.2 CONTRACT SECURITY

- 11.2.1 The *Design-Builder* shall, prior to commencement of the *Design Services* or *Work* or within such other time as may be specified in the *Contract Documents*, provide to the *Owner* any *Contract* security specified in the *Contract Documents*.
- 11.2.2 If the *Contract Documents* require surety bonds to be provided, such bonds shall be issued by a duly licensed surety company authorized to transact the business of suretyship in the province or territory of the *Place of the Work* and shall be maintained in good standing until the fulfillment of the *Contract*. The form of such bonds shall be in accordance with the latest edition of the CCDC approved bond forms.

PART 12 INDEMNIFICATION, LIMITATION OF LIABILITY, WAIVER OF CLAIMS, AND WARRANTY

GC 12.1 DEFINITION AND SURVIVAL

- 12.1.1 For the purposes of Part 12 – INDEMNIFICATION, LIMITATION OF LIABILITY, WAIVER OF CLAIMS, AND WARRANTY, “claim” or “claims” shall mean claims, demands, losses, costs, damages, actions, suits or proceedings, whether in contract or tort.
- 12.1.2 Part 12 of the General Conditions – INDEMNIFICATION, LIMITATION OF LIABILITY, WAIVER OF CLAIMS, AND WARRANTY shall survive suspension or termination of the *Contract*.

Note: This contract is protected by copyright. Use of a CCDC 14 document not containing a CCDC 14 copyright seal constitutes an infringement of copyright. Only sign this contract if the document cover page bears a CCDC 14 copyright seal to demonstrate that it is intended by the parties to be an accurate and unamended version of CCDC 14 – 2013 except to the extent that any alterations, additions or modifications are set forth in supplementary conditions.

GC 12.2 INDEMNIFICATION

- 12.2.1 Without restricting the parties' obligations to indemnify one another as described in paragraph 12.2.4 and the Owner's obligation to indemnify as described in paragraph 12.2.5, the *Owner* and the *Design-Builder* shall each indemnify and hold harmless the other from and against all claims, whether in respect to losses suffered by them or in respect to claims by third parties that arise out of, or are attributable in any respect to their involvement as parties to this *Contract*, provided such claims are:
- .1 caused by:
 - (1) errors, omissions, or negligence of the party from whom indemnification is sought or anyone for whom that party is responsible, or
 - (2) a breach of this *Contract* by the party from whom indemnification is sought; and
 - .2 made by *Notice in Writing* within a period of 6 years from the date of *Substantial Performance of the Work* as set out in the certificate of *Substantial Performance of the Work* issued pursuant to paragraph 5.4.3 of GC 5.4 – SUBSTANTIAL PERFORMANCE OF THE WORK or within such shorter period as may be prescribed by any limitation statute of the province or territory of the *Place of the Work*.
- The parties expressly waive the right to indemnity for claims other than those provided for in this *Contract*.
- 12.2.2 The obligation of either party to indemnify as set forth in paragraph 12.2.1 shall be limited as follows:
- .1 In respect to losses suffered by the *Owner* and the *Design-Builder* for which insurance is to be provided by either party pursuant to GC 11.1 – INSURANCE, the general liability insurance limit for one occurrence as referred to in CCDC 41 – CCDC INSURANCE REQUIREMENTS in effect at the time of proposal or bid closing.
 - .2 In respect to losses suffered by the *Owner* and the *Design-Builder* for which insurance is not required to be provided by either party in accordance with GC 11.1 – INSURANCE, the greater of the *Contract Price* as recorded in Article A-4 of the Agreement – CONTRACT PRICE or \$2,000,000, but in no event shall the sum be greater than \$20,000,000.
 - .3 In respect to claims by third parties for direct loss resulting from bodily injury, sickness, disease or death, or to injury to or destruction of tangible property, the obligation to indemnify is without limit. In respect to all other claims for indemnity as a result of claims advanced by third parties, the limits of indemnity set forth in paragraphs 12.2.2.1 and 12.2.2.2 shall apply.
- 12.2.3 The obligation of either party to indemnify the other as set forth in paragraphs 12.2.1 and 12.2.2 shall be inclusive of interest and all legal costs.
- 12.2.4 The *Owner* and the *Design-Builder* shall indemnify and hold harmless the other from and against all claims arising out of their obligations described in GC 9.2 – TOXIC AND HAZARDOUS SUBSTANCES AND MATERIALS.
- 12.2.5 The *Owner* shall indemnify and hold harmless the *Design-Builder* from and against all claims:
- .1 as described in paragraph 10.3.2 of GC 10.3 – PATENT FEES, and
 - .2 arising out of the *Design-Builder's* performance of the *Contract* which are attributable to a lack of or defect in title or an alleged lack of or defect in title to the *Place of the Work*.
- 12.2.6 In respect to any claim for indemnity or to be held harmless by the *Owner* or the *Design-Builder*:
- .1 *Notice in Writing* of such claim shall be given within a reasonable time after the facts upon which such claim is based became known; and
 - .2 should any party be required as a result of its obligation to indemnify another to pay or satisfy a final order, judgment or award made against the party entitled by this *Contract* to be indemnified, then the indemnifying party upon assuming all liability for any costs that might result shall have the right to appeal in the name of the party against whom such final order or judgment has been made until such rights of appeal have been exhausted.

GC 12.3 LIMITATION OF LIABILITY FOR DESIGN SERVICES

- 12.3.1 Notwithstanding any other provisions of this *Contract*, the *Design-Builder's* liability for claims which the *Owner* may have against the *Design-Builder*, including the *Design-Builder's* officers, directors, employees and representatives, that arise out of, or are related to, the *Design Services*, shall be limited:
- .1 to claims arising from errors, omissions, or negligent performance of the *Design Services* by the *Consultant* or *Other Consultant* and
 - .2 where claims are covered by insurance the *Design-Builder* is obligated to carry pursuant to GC 11.1 – INSURANCE, to the amount of such insurance.

Note: This contract is protected by copyright. Use of a CCDC 14 document not containing a CCDC 14 copyright seal constitutes an infringement of copyright. Only sign this contract if the document cover page bears a CCDC 14 copyright seal to demonstrate that it is intended by the parties to be an accurate and unamended version of CCDC 14 – 2013 except to the extent that any alterations, additions or modifications are set forth in supplementary conditions.

GC 12.4 WAIVER OF CLAIMS

- 12.4.1 Subject to any lien legislation applicable at the *Place of the Work*, as of the fifth calendar day before the expiry of the lien period provided by the lien legislation applicable at the *Place of the Work*, the *Design-Builder* waives and releases the *Owner* from all claims which the *Design-Builder* has or reasonably ought to have knowledge of that could be advanced by the *Design-Builder* against the *Owner* arising from the *Design-Builder's* involvement in the *Design Services* or *Work*, including, without limitation, those arising from negligence or breach of contract in respect to which the cause of action is based upon acts or omissions which occurred prior to or on the date of *Substantial Performance of the Work*, except as follows:
- .1 claims arising prior to or on the date of *Substantial Performance of the Work* for which *Notice in Writing* of claim has been received by the *Owner* from the *Design-Builder* no later than the sixth calendar day before the expiry of the lien period provided by the lien legislation applicable at the *Place of the Work*;
 - .2 indemnification for claims advanced against the *Design-Builder* by third parties for which a right of indemnification may be asserted by the *Design-Builder* against the *Owner* pursuant to the provisions of this *Contract*;
 - .3 claims for which a right of indemnity could be asserted by the *Design-Builder* pursuant to the provisions of paragraphs 12.2.4 or 12.2.5 of GC 12.2 – INDEMNIFICATION; and
 - .4 claims resulting from acts or omissions which occur after the date of *Substantial Performance of the Work*.
- 12.4.2 The *Design-Builder* waives and releases the *Owner* from all claims referenced in paragraph 12.4.1.4 except for those referred in paragraphs 12.4.1.2 and 12.4.1.3 and claims for which *Notice in Writing* of claim has been received by the *Owner* from the *Design-Builder* within 395 calendar days following the date of *Substantial Performance of the Work*.
- 12.4.3 Subject to any lien legislation applicable at the *Place of the Work*, as of the fifth calendar day before the expiry of the lien period provided by the lien legislation applicable at the *Place of the Work*, the *Owner* waives and releases the *Design-Builder* from all claims which the *Owner* has or reasonably ought to have knowledge of that could be advanced by the *Owner* against the *Design-Builder* arising from the *Owner's* involvement in the *Design Services* or *Work*, including, without limitation, those arising from negligence or breach of contract in respect to which the cause of action is based upon acts or omissions which occurred prior to or on the date of *Substantial Performance of the Work*, except as follows:
- .1 claims arising prior to or on the date of *Substantial Performance of the Work* for which *Notice in Writing* of claim has been received by the *Design-Builder* from the *Owner* no later than the sixth calendar day before the expiry of the lien period provided by the lien legislation applicable at the *Place of the Work*;
 - .2 indemnification for claims advanced against the *Owner* by third parties for which a right of indemnification may be asserted by the *Owner* against the *Design-Builder* pursuant to the provisions of this *Contract*;
 - .3 claims for which a right of indemnity could be asserted by the *Owner* against the *Design-Builder* pursuant to the provisions of paragraph 12.2.4 of GC 12.2 – INDEMNIFICATION;
 - .4 damages arising from the *Design-Builder's* actions which result in substantial defects or deficiencies in the *Work*. “Substantial defects or deficiencies” mean those defects or deficiencies in the *Work* which affect the *Work* to such an extent or in such a manner that a significant part or the whole of the *Work* is unfit for the purpose intended by the *Contract Documents*;
 - .5 claims arising pursuant to GC 12.5 – WARRANTY; and
 - .6 claims arising from acts or omissions which occur after the date of *Substantial Performance of the Work*.
- 12.4.4 The *Owner* waives and releases the *Design-Builder* from all claims referred to in paragraph 12.4.3.4 except claims for which *Notice in Writing* of claim has been received by the *Design-Builder* from the *Owner* within a period of six years from the date of *Substantial Performance of the Work* should any limitation statute of the Province or Territory of the *Place of the Work* permit such agreement. If the applicable limitation statute does not permit such agreement, within such shorter period as may be prescribed by:
- .1 any limitation statute of the Province or Territory of the *Place of the Work*; or
 - .2 if the *Place of the Work* is the Province of Quebec, then Article 2118 of the Civil Code of Quebec.
- 12.4.5 The *Owner* waives and releases the *Design-Builder* from all claims referenced in paragraph 12.4.3.6 except for those referred in paragraph 12.4.3.2, 12.4.3.3 and those arising under GC 12.5 – WARRANTY and claims for which *Notice in Writing* has been received by the *Design-Builder* from the *Owner* within 395 calendar days following the date of *Substantial Performance of the Work*.
- 12.4.6 “*Notice in Writing* of claim” as provided for in GC 12.4 – WAIVER OF CLAIMS to preserve a claim or right of action which would otherwise, by the provisions of GC 12.4 – WAIVER OF CLAIMS, be deemed to be waived, must include the following:
- .1 a clear and unequivocal statement of the intention to claim;

Note: This contract is protected by copyright. Use of a CCDC 14 document not containing a CCDC 14 copyright seal constitutes an infringement of copyright. Only sign this contract if the document cover page bears a CCDC 14 copyright seal to demonstrate that it is intended by the parties to be an accurate and unamended version of CCDC 14 – 2013 except to the extent that any alterations, additions or modifications are set forth in supplementary conditions.

- .2 a statement as to the nature of the claim and the grounds upon which the claim is based; and
 - .3 a statement of the estimated quantum of the claim.
- 12.4.7 The party giving “*Notice in Writing* of claim” as provided for in GC 12.4 – WAIVER OF CLAIMS shall submit within a reasonable time a detailed account of the amount claimed.
- 12.4.8 Where the event or series of events giving rise to a claim made under paragraphs 12.4.1 or 12.4.3 has a continuing effect, the detailed account submitted under paragraph 12.4.7 shall be considered to be an interim account and the party making the claim shall submit further interim accounts, at reasonable intervals, giving the accumulated amount of the claim and any further grounds upon which it is based. The party making the claim shall submit a final account after the end of the effects resulting from the event or series of events.
- 12.4.9 If a *Notice in Writing* of claim pursuant to paragraph 12.4.1.1 is received on the seventh or sixth calendar day before the expiry of the lien period provided by the lien legislation applicable at the *Place of the Work*, the period within which *Notice in Writing* of claim is received pursuant to paragraph 12.4.3.1 shall be extended to two calendar days before the expiry of the lien period provided by the lien legislation applicable at the *Place of the Work*.
- 12.4.10 If a *Notice in Writing* of claim pursuant to paragraph 12.4.3.1 is received on the seventh or sixth calendar day before the expiry of the lien period provided by the lien legislation applicable at the *Place of the Work*, the period within which *Notice in Writing* of claim is received pursuant to paragraph 12.4.1.1 shall be extended to two calendar days before the expiry of the lien period provided by the lien legislation applicable at the *Place of the Work*.

GC 12.5 WARRANTY

- 12.5.1 Except for extended warranties as described in paragraph 12.5.6, the warranty period under the *Contract* is one year from the date of *Substantial Performance of the Work*.
- 12.5.2 The *Design-Builder* warrants that the *Work* is in accordance with the *Contract Documents*.
- 12.5.3 The *Owner* shall promptly give the *Design-Builder Notice in Writing* of observed defects and deficiencies which occur during the one year warranty period.
- 12.5.4 The *Design-Builder* shall promptly correct, at the *Design-Builder's* expense, any work which is not in accordance with the *Contract Documents* or defects or deficiencies in the *Work* which appear at any time until the end of the warranty periods specified in the *Contract Documents*.
- 12.5.5 The *Design-Builder* shall correct or pay for damage resulting from corrections made under the requirements of paragraph 12.5.4.
- 12.5.6 Any extended warranties required beyond the one year warranty period as described in paragraph 12.5.1, shall be as specified in the *Contract Documents*. Extended warranties shall be issued by the warrantor for the benefit of the *Owner*. The *Design-Builder's* responsibility with respect to extended warranties shall be limited to obtaining any such extended warranties from the warrantor. The obligations under such extended warranties are solely the responsibilities of the warrantor.
- 12.5.7 The *Design-Builder* does not warrant against the effects of corrosion, erosion or wear and tear of any *Product* or failure of any *Product* due to faulty operations or maintenance by the *Owner* or conditions of operation more severe than those specified for the *Product*.
- 12.5.8 The warranties specified in GC 12.5 – WARRANTY or elsewhere in the *Contract Documents* are the only warranties of the *Design-Builder* applicable to the *Work* and no other warranties, statutory or otherwise, are implied.

Note: This contract is protected by copyright. Use of a CCDC 14 document not containing a CCDC 14 copyright seal constitutes an infringement of copyright. Only sign this contract if the document cover page bears a CCDC 14 copyright seal to demonstrate that it is intended by the parties to be an accurate and unamended version of CCDC 14 – 2013 except to the extent that any alterations, additions or modifications are set forth in supplementary conditions.

APPENDIX C

PRICING SHEETS

Site (Walker Island Park / Nusatsum Park):	
Design Concept Option #:	
Name / Description of Design Concept Option:	
Name Brand of Equipment Showcased:	

1.0 Site Preparation Works	
1.1 Removal and disposal of existing equipment.	
1.2 Removal and local stockpiling of unsuitable organic (topsoil) material.	
1.3 Supply, placement, and compaction of imported base / subbase material.	
2.0 Playground Supply and Installation	
2.1 Supply only of playground equipment.	
2.2 Delivery to site and installation, including footings.	
2.3 Playground edger supply and installation.	
2.4 Supply and installation of safety surfacing.	
3.0 Site Finishing and Amenity Landscaping	
3.1 Site finished grading and drainage.	
3.2 Restoration including seeding, shade tree planting, and similar.	
3.2 Compacted granular walkways and other access features.	
3.3 Site furnishings including benches, waste receptables, and similar.	
3.4 Fencing, bollards, or similar protective features.	
Subtotal	
GST	
TOTAL QUOTATION PRICE	

Proponent Name:	
Authorized Signature:	
Print Name / Title:	